



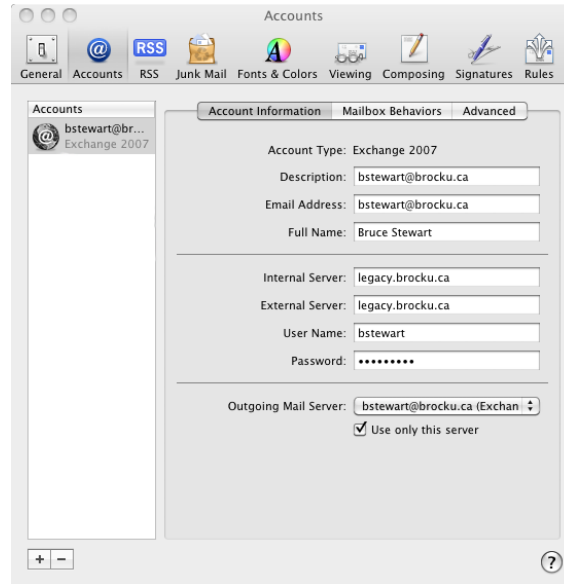
Legacy Settings for Apple Mail and Snow Leopard

Date: August 25, 2010

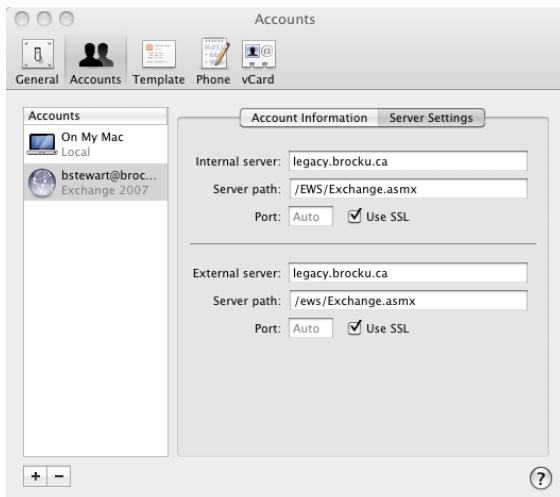
Version: 1.0

If Apple Mail in Snow Leopard is having trouble connecting to the e-mail Exchange Server, changing the following settings will resolve this issue:

- 1) In Mail → Preferences → Accounts → Select your Exchange account on the left and make the internal and external server legacy.brocku.ca



- 2) Follow the same procedure in the preferences of iCal under Accounts and in Address Book under Accounts as shown below.





Legacy Settings for Apple Mail and Snow Leopard

Date: August 25, 2010

Version: 1.0

Note: these settings only affect users who are on Brock's Exchange 2007 servers and are running Apple Mail in OS X 10.6 or later. If you are unsure of your OS or e-mail server, please contact the ITS HelpDesk at extension 4357.