

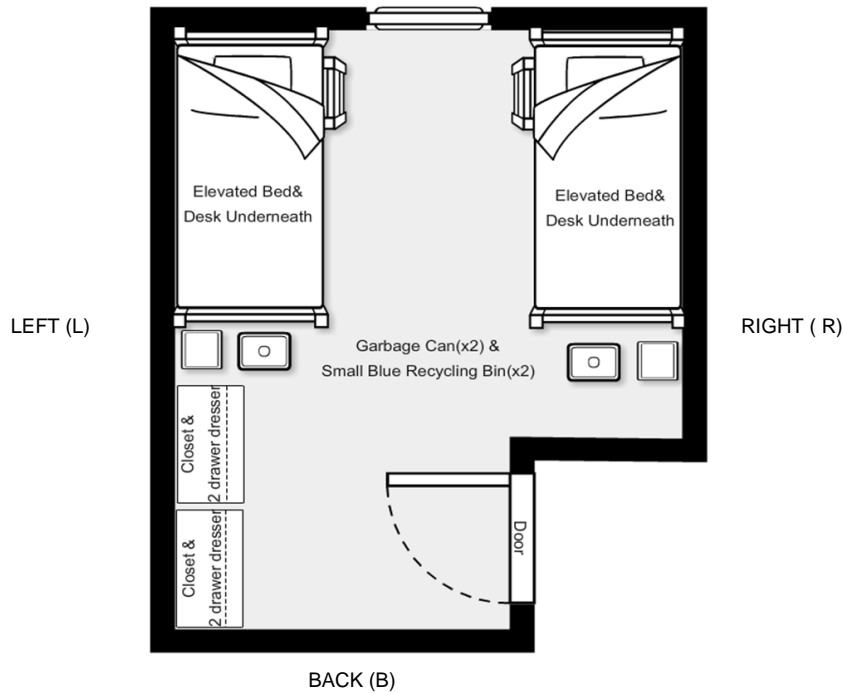
TYPICAL VILLAGE DOUBLE ROOM LAYOUT

DID YOU KNOW.....

- All doors and drawers should open fully without hitting anything
- Vents and grills must not be blocked/covered (for proper heat/air flow)
- The bed must not be placed in a way that blocks access to the window (Having to climb on the bed to get to the window is not acceptable)
- All furniture should be reasonably accessible
- Light switches, blind cords must not be blocked by furniture
- The desk must be within the provided phone cord length to the phone/internet ports. All ports must be accessible

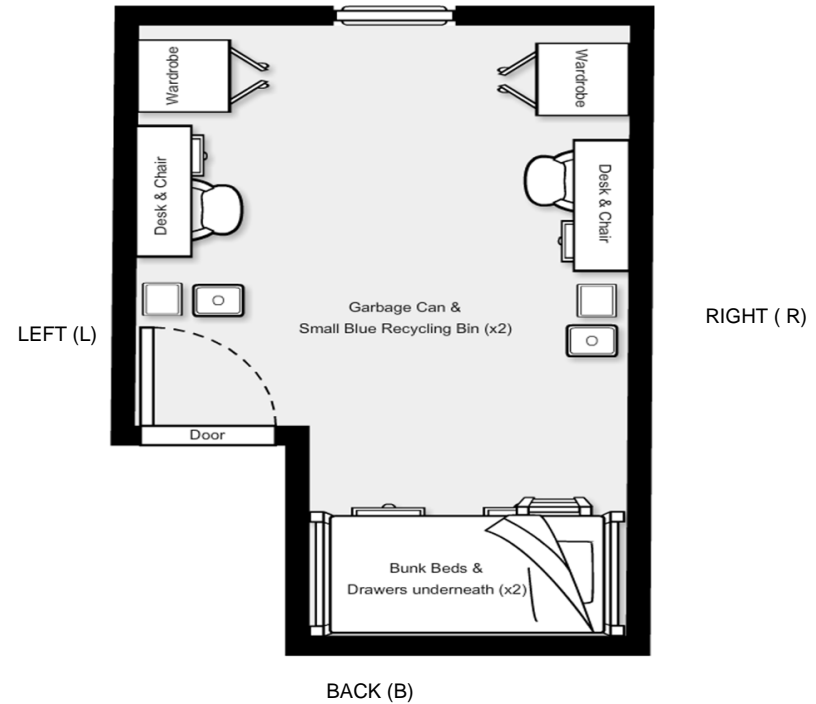
Courts 1-6

FRONT (F)



Courts 7-12

FRONT (F)



Before checking out of residence these diagrams and points must be followed as closely as possible (ensure you follow the applicable layout for your style of room). Failure to do so may result in financial consequences regardless of how the room was arranged upon arrival or during your stay.