

# **Brock University**

## **FTE Enrolment, 2011-2012**

---

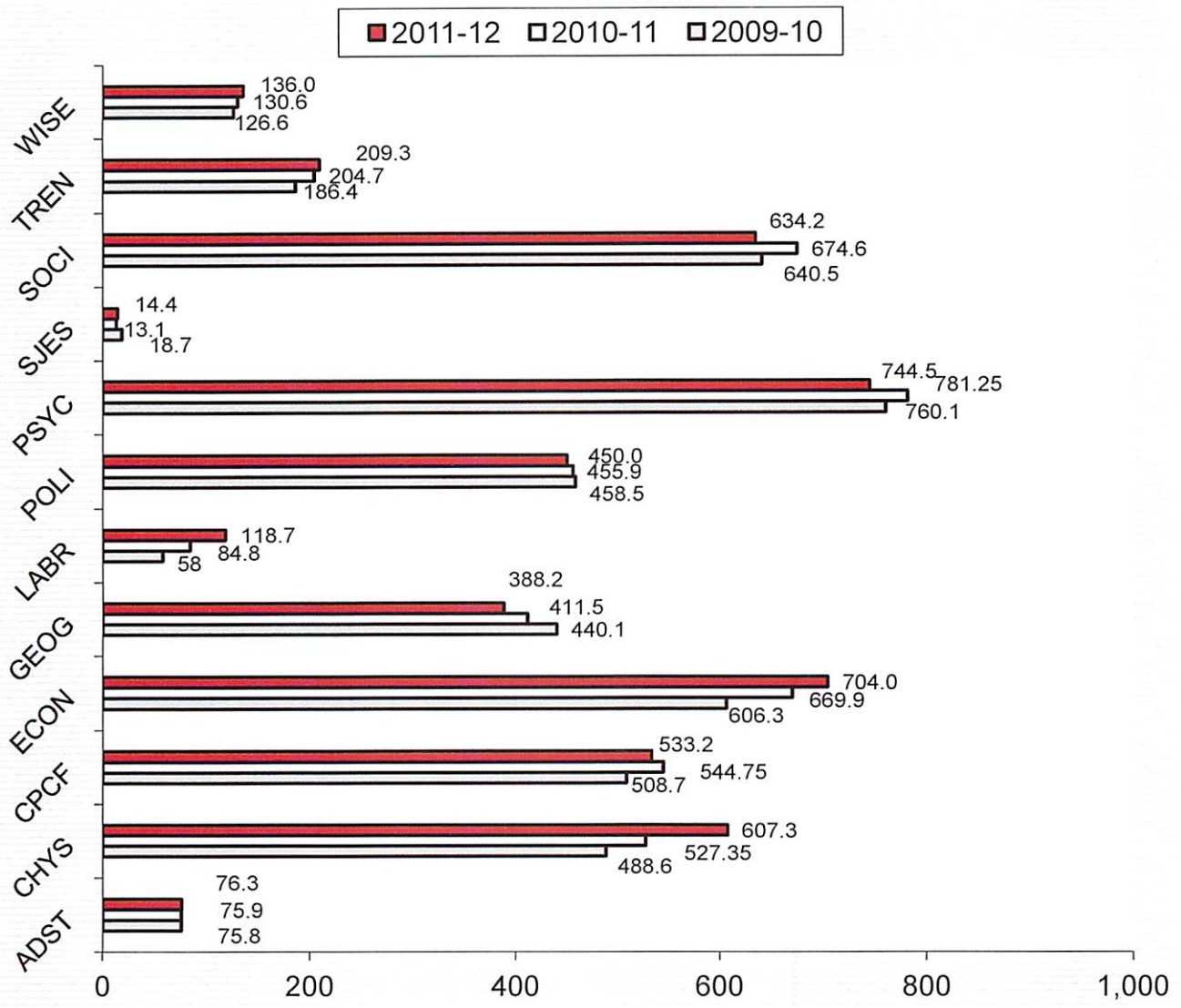
# **Faculty of Social Sciences**



---

Faint, illegible text at the bottom of the page, likely bleed-through from the reverse side.

# Faculty of Social Sciences FTE Enrolment, 2009-10 to 2011-12



FULL-TIME EQUIVALENT (FTE) ENROLMENT: THREE-YEAR SUMMARY

**FACULTY OF SOCIAL SCIENCES**

(Data include ALL sections and ALL enrolment in ALL sessions)

**A. UNDERGRADUATE COURSE ENROLMENTS**

	2009-10					2010-11					2011-12				
	Fall/Winter			Spring/ Summer	All Sessions	Fall/Winter			Spring/ Summer	All Sessions	Fall/Winter			Spring/ Summer	All Sessions
	Nov. 1st	Feb. 1st	Sub-Total			Nov. 1st	Feb. 1st	Sub-Total			Nov. 1st	Feb. 1st	Sub-Total		
Year I	7,395	7,366	7,380.5	360.0	<b>7,740.5</b>	8,151	7,510	7,830.5	229.5	<b>8,060.0</b>	8,377	7,731	8,054.0	197.5	<b>8,251.5</b>
Year II	7,082	6,577	6,829.5	313.5	<b>7,143.0</b>	7,749	6,604	6,953.75	377.5	<b>7,331.25</b>	7,754	6,773	6,999.0	235.0	<b>7,234.0</b>
Year III	4,142	4,421	4,281.5	256.0	<b>4,537.5</b>	4,273	4,999	4,635.0	286.0	<b>4,921.0</b>	4,518	5,066	4,797.0	232.5	<b>5,029.5</b>
Year IV	1,278	1,310	1,249.5	19.5	<b>1,269.0</b>	1,382	1,453	1,383.75	11.0	<b>1,394.75</b>	1,382	1,478	1,371.75	4.0	<b>1,375.75</b>
Total	19,897	19,674	19,741.0	949.0	<b>20,690.0</b>	21,555	20,566	20,803.0	904.0	<b>21,707.0</b>	22,031	21,048	21,221.75	669.0	<b>21,890.75</b>

**B. AVERAGE CLASS/SECTION SIZES**

	Fall/Winter		Spring/Summer		Average All Sessions	Fall/Winter		Spring/Summer		Average All Sessions	Fall/Winter		Spring/Summer		Average All Sessions
	Sections	Ave.	Sections	Ave.		Sections	Ave.	Sections	Ave.		Sections	Ave.	Sections	Ave.	
Year I	22.0	335.5	7.0	51.4	<b>266.9</b>	24.0	326.3	5.0	45.9	<b>277.9</b>	25.0	322.2	3.0	65.8	<b>294.7</b>
Year II	70.0	97.6	6.5	48.2	<b>93.4</b>	72.0	96.6	8.0	47.2	<b>91.6</b>	73.0	95.9	9.0	26.1	<b>88.2</b>
Year III	94.0	45.5	11.5	22.3	<b>43.0</b>	92.5	50.1	12.5	22.9	<b>46.9</b>	97.0	49.5	7.0	33.2	<b>48.4</b>
Year IV	74.0	16.9	5.0	3.9	<b>16.1</b>	83.0	16.7	3.0	3.7	<b>16.2</b>	83.0	16.5	2.5	1.6	<b>16.1</b>
Total:	260.0	75.9	30.0	31.6	<b>71.3</b>	271.5	76.6	28.5	31.7	<b>72.4</b>	278.0	76.3	21.5	31.1	<b>73.1</b>

**C. GRADUATE ENROLMENT**

	Full-Time	Part-Time	Graduate FTEs
	Nov.	Nov. x .3	
2009-10	171.5	58.80	<b>230.30</b>
2010-11	166.5	66.45	<b>232.95</b>
2011-12	180.0	57.90	<b>237.90</b>

**D. TOTAL FTE ENROLMENT**

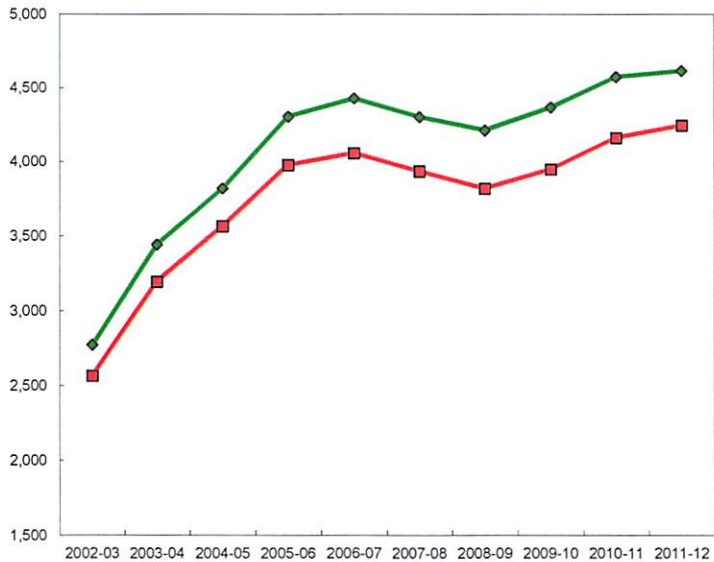
	UNDERGRADUATE FTEs (Course Enrolments/5)						GRADUATE		TOTAL	% Change from Prev. Year
	Fall/Winter		Spring/Summer		Sub-total		#	%		
	#	%	#	%	#	%				
2009-10	3,948.2	90.4%	189.8	4.3%	4,138.0	94.7%	230.3	5.3%	<b>4,368.3</b>	
2010-11	4,160.6	91.0%	180.8	4.0%	4,341.4	94.9%	233.0	5.1%	<b>4,574.4</b>	<b>4.7%</b>
2011-12	4,244.4	91.9%	133.8	2.9%	4,378.2	94.8%	237.9	5.2%	<b>4,616.1</b>	<b>0.9%</b>

**FTE Enrolment, 2011-12**

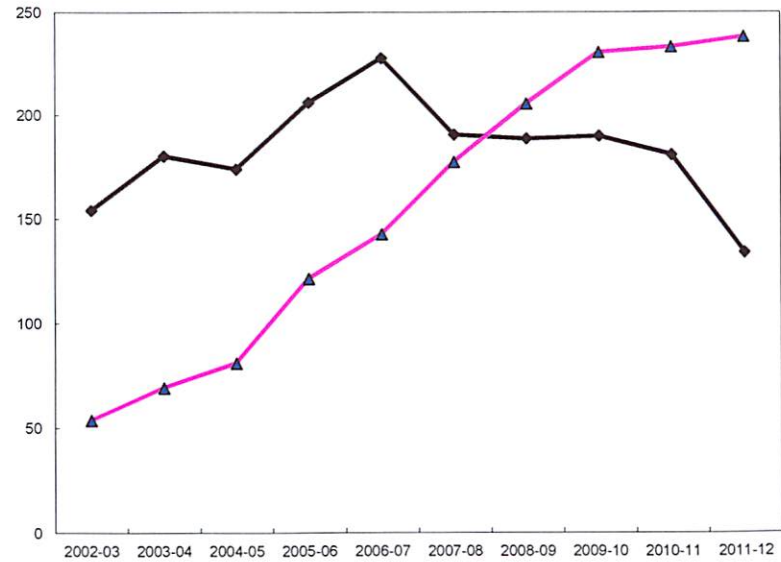
Level	FTEs	%
Year I	1,650.30	35.8%
Year II	1,446.80	31.3%
Year III	1,005.90	21.8%
Year IV	275.15	6.0%
<b>Undergraduate Sub-total</b>	<b>4,378.15</b>	<b>94.8%</b>
<b>Graduate Sub-total</b>	<b>237.90</b>	<b>5.2%</b>
<b>Grand Total</b>	<b>4,616.05</b>	<b>100.0%</b>

**FTE ENROLMENT**  
**Faculty of Social Sciences**

YEAR	Undergraduate				Graduate				TOTAL FTEs	
	Fall/Winter	% Change	SP/SU	% Change	Total	% Change	#	% Change	#	% Change
2002-03	2,564.4		154.1		2,718.5		53.7		2,772.2	
2003-04	3,192.5	24.5%	180.2	16.9%	3,372.7	24.1%	69.2	28.8%	3,441.9	24.2%
2004-05	3,564.0	11.6%	173.9	-3.5%	3,737.9	10.8%	80.9	16.9%	3,818.8	11.0%
2005-06	3,977.1	11.6%	206.2	18.6%	4,183.3	11.9%	121.4	50.1%	4,304.7	12.7%
2006-07	4,058.1	2.0%	227.7	10.4%	4,285.8	2.5%	142.6	17.5%	4,428.4	2.9%
2007-08	3,934.2	-3.1%	190.6	-16.3%	4,124.8	-3.8%	177.3	24.3%	4,302.1	-2.9%
2008-09	3,818.2	-2.9%	188.6	-1.0%	4,006.8	-2.9%	205.5	15.9%	4,212.3	-2.1%
2009-10	3,948.2	3.4%	189.8	0.6%	4,138.0	3.3%	230.3	12.1%	4,368.3	3.7%
2010-11	4,160.6	5.4%	180.8	-4.7%	4,341.4	4.9%	233.0	1.2%	4,574.4	4.7%
2011-12	4,244.4	2.0%	133.8	-26.0%	4,378.2	0.8%	237.9	2.1%	4,616.1	0.9%
10 Yr. Ch.	1,680.0	65.5%	-20.3	-13.2%	1,659.7	61.1%	184.2	342.9%	1,843.8	66.5%



■ Fall/Winter Ug    ◆ Total

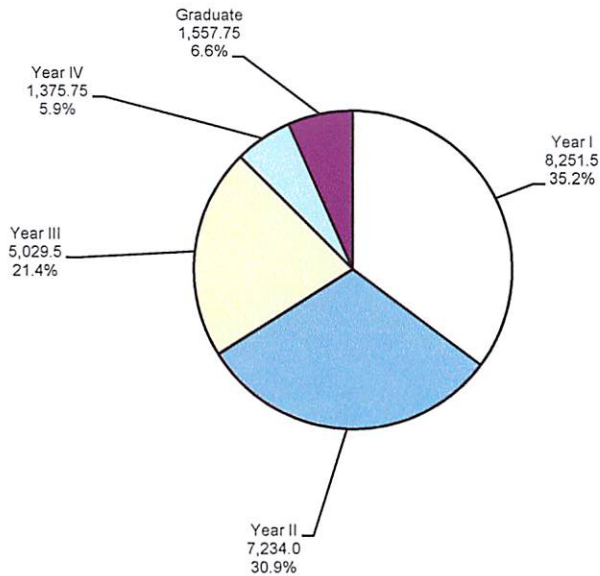


◆ Spring/Summer    ▲ Graduate

### Course FCEs and FCE Enrolments -- Faculty of Social Sciences

Course Level	Spring/Summer 2011-12			Fall/Winter 2011-12			Total		
	FCEs	Registered	FCE Enrl.	FCEs	Nov.1 Reg.	Feb.1 Reg.	FCE Enrl.	FCEs	FCE Enrl.
Year I	3.0	292	197.5	25.0	8,377	7,731	8,054.0	28.0	8,251.5
Year II	9.0	346	235.0	73.0	7,754	6,773	6,999.0	82.0	7,234.0
Year III	7.0	465	232.5	97.0	4,518	5,066	4,797.0	104.0	5,029.5
Year IV	2.5	6	4.0	83.0	1,382	1,478	1,371.75	85.5	1,375.75
<b>Undergraduate</b>	<b>21.5</b>	<b>1,109</b>	<b>669.0</b>	<b>278.0</b>	<b>22,031</b>	<b>21,048</b>	<b>21,221.75</b>	<b>299.5</b>	<b>21,890.75</b>
<b>Graduate</b>	<b>28.5</b>	<b>274.0</b>	<b>315.5</b>	<b>102.25</b>	<b>851</b>	<b>671</b>	<b>1,242.25</b>	<b>130.75</b>	<b>1,557.75</b>
<b>Faculty of Social Sciences Total</b>	<b>50.0</b>	<b>1,383.0</b>	<b>984.5</b>	<b>380.25</b>	<b>22,882</b>	<b>21,719</b>	<b>22,464.0</b>	<b>430.25</b>	<b>23,448.5</b>

FCE Course Enrolments by Level



FCE Course Enrolments by Session

