

FULL-TIME EQUIVALENT (FTE) ENROLMENT: THREE-YEAR SUMMARY

Department: Sociology

(Data include ALL sections and ALL enrolment in ALL sessions)

A. UNDERGRADUATE COURSE ENROLMENTS

	2009-10					2010-11					2011-12				
	Fall/Winter			Spring/ Summer	All Sessions	Fall/Winter			Spring/ Summer	All Sessions	Fall/Winter			Spring/ Summer	All Sessions
	Nov. 1st	Feb. 1st	Sub-Total			Nov. 1st	Feb. 1st	Sub-Total			Nov. 1st	Feb. 1st	Sub-Total		
Year I	1,118	1,028	1,073.0	76.0	1149.0	1,368	1,116	1,242.0		1242.0	1,354	1,215	1,284.5		1284.5
Year II	959	1,043	1,001.0	40.0	1041.0	1,067	736	901.5	67.5	969.0	767	790	778.5		778.5
Year III	730	819	774.5	47.5	822.0	811	784	797.5	58.0	855.5	718	806	762.0	36.0	798.0
Year IV	136	192	164.0		164.0	208	279	243.5		243.5	247	224	235.5		235.5
Total	2,943	3,082	3,012.5	163.5	3,176.0	3,454	2,915	3,184.5	125.5	3,310.0	3,086	3,035	3,060.5	36.0	3,096.5

B. AVERAGE CLASS/SECTION SIZES

	Fall/Winter		Spring/Summer		Average All Sessions	Fall/Winter		Spring/Summer		Average All Sessions	Fall/Winter		Spring/Summer		Average All Sessions
	Sections	Ave.	Sections	Ave.		Sections	Ave.	Sections	Ave.		Sections	Ave.	Sections	Ave.	
Year I	3.0	357.7	1.0	76.0	287.3	4.5	276.0			276.0	5.0	256.9			256.9
Year II	10.0	100.1	1.0	40.0	94.6	9.5	94.9	1.0	67.5	92.3	9.5	81.9			81.9
Year III	10.5	73.8	1.5	31.7	68.5	9.5	83.9	2.0	29.0	74.4	10.5	72.6	0.5	72.0	72.5
Year IV	12.5	13.1			13.1	15.0	16.2			16.2	15.0	15.7			15.7
Total:	36.0	83.7	3.5	46.7	80.4	38.5	82.7	3.0	41.8	79.8	40.0	76.5	0.5	72.0	76.5

C. GRADUATE ENROLMENT

	Full-Time	Part-Time	Graduate FTEs
	Nov.	Nov. x .3	
2009-10	5	0.3	5.3
2010-11	12	0.6	12.6
2011-12	14	0.9	14.9

FTE Enrolment, 2011-12

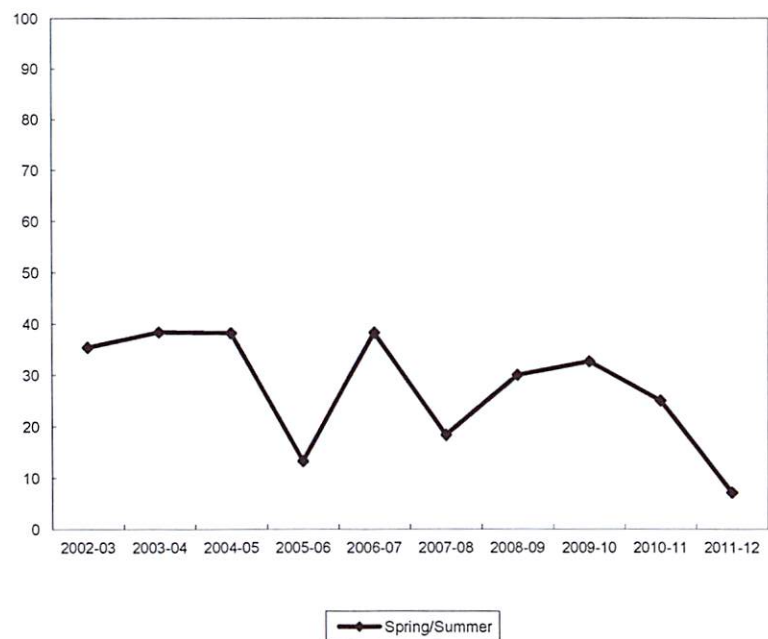
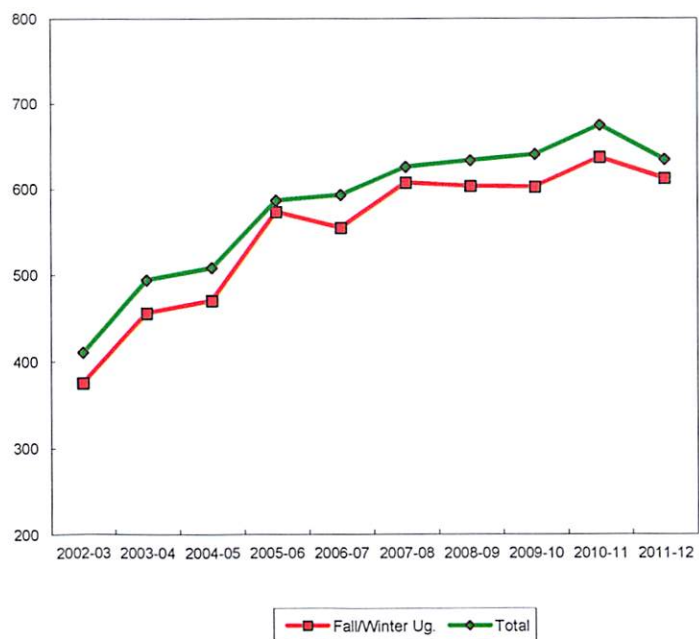
Level	FTEs	%
Year I	256.90	40.5%
Year II	155.70	24.6%
Year III	159.60	25.2%
Year IV	47.10	7.4%
Undergraduate Sub-total	619.30	97.7%
Graduate Sub-total	14.90	2.3%
Grand Total	634.20	100.0%

D. TOTAL FTE ENROLMENT

	UNDERGRADUATE FTEs (Course Enrolments/5)						GRADUATE FTEs		TOTAL	% Change from Prev. Year
	Fall/Winter		Spring/Summer		Sub-total		#	%		
	#	%	#	%	#	%				
2009-10	602.5	94.1%	32.7	5.1%	635.2	99.2%	5.30	0.8%	640.5	
2010-11	636.9	94.4%	25.1	3.7%	662.0	98.1%	12.60	1.9%	674.6	5.3%
2011-12	612.1	96.5%	7.2	1.1%	619.3	97.7%	14.90	2.3%	634.2	-6.0%

FTE ENROLMENT Sociology

YEAR	Undergraduate				Graduate		TOTAL FTEs		
	Fall/Winter	% Change	SP/SU	% Change	Total	% Change	#	% Change	
2002-03	375.5	8.8%	35.4	22.9%	410.9	9.9%		410.9	9.9%
2003-04	456.0	21.4%	38.4	8.5%	494.4	20.3%		494.4	20.3%
2004-05	470.2	3.1%	38.2	-0.5%	508.4	2.8%		508.4	2.8%
2005-06	573.4	21.9%	13.3	-65.2%	586.7	15.4%		586.7	15.4%
2006-07	554.9	-3.2%	38.3	188.0%	593.2	1.1%		593.2	1.1%
2007-08	607.4	9.5%	18.4	-52.0%	625.8	5.5%		625.8	5.5%
2008-09	603.2	-0.5%	30.1	63.6%	633.3	1.4%		633.3	1.4%
2009-10	602.5	-0.1%	32.7	8.6%	635.2	0.3%	5.3	640.5	1.1%
2010-11	636.9	5.7%	25.1	-23.2%	662.0	4.2%	12.6	674.6	5.3%
2011-12	612.1	-3.9%	7.2	-71.3%	619.3	-6.5%	14.9	634.2	-6.0%
10 Yr. Ch.	236.6	63.0%	-28.2	-79.7%	208.4	50.7%	14.9	223.3	54.3%



2011-12 Course Enrolment

Course (XXXX XXXX 0A0B A-- Duration, B--Section)	Spring/Summer, 2011-12			Fall/Winter, 2011-12			
	FCEs	Registered	FCE Enrolment	FCEs	Nov.1 Registered	Feb. 1 Registered	FCE Enrolment
SOCI 1F90 0101				1.0	368	347	357.5
SOCI 1F90 0102				1.0	372	363	367.5
SOCI 1F90 0103				1.0	369	329	349.0
SOCI 1F99 0101				1.0	90	78	84.0
SOCI 1P01 0301				0.5		98	49.0
SOCI 1P80 0201				0.5	155		77.5
Year I Total				5.0	1,354	1,215	1,284.5
SOCI 2P10 0201				0.5	80		40.0
SOCI 2P10 0202				0.5	79		39.5
SOCI 2P11 0201				0.5	79		39.5
SOCI 2P11 0202				0.5	88		44.0
SOCI 2P12 0301				0.5		66	33.0
SOCI 2P12 0302				0.5		94	47.0
SOCI 2P13 0301				0.5		79	39.5
SOCI 2P13 0302				0.5		76	38.0
SOCI 2P20 0301 +WISE				0.5		99	49.5
SOCI 2P21 0201 +WISE				0.5	97		48.5
SOCI 2P22 0301				0.5		100	50.0
SOCI 2P32 0201 +LABR				0.5	67		33.5
SOCI 2P33 0201				0.5	100		50.0
SOCI 2P45 0301 +WISE				0.5		52	26.0
SOCI 2P52 0301				0.5		78	39.0
SOCI 2P61 0201				0.5	100		50.0
SOCI 2P62 0301				0.5		68	34.0
SOCI 2P65 0301				0.5		78	39.0
SOCI 2P85 0201				0.5	77		38.5
Year II Total				9.5	767	790	778.5
SOCI 3P00 0201				0.5	97		48.5
SOCI 3P00 0202				0.5	79		39.5
SOCI 3P01 0301				0.5		98	49.0
SOCI 3P01 0302				0.5		72	36.0
SOCI 3P12 0201				0.5	40		20.0
SOCI 3P12 0301				0.5		56	28.0
SOCI 3P20 0301 +WISE				0.5		80	40.0
SOCI 3P26 0301 +CHSC				0.5		72	36.0
SOCI 3P30 0201 +WISE LABR				0.5	77		38.5
SOCI 3P47 0201	0.5	72	36.0				
SOCI 3P48 0301				0.5		60	30.0
SOCI 3P51 0201 +WISE				0.5	75		37.5
SOCI 3P55 0201 +SPMA				0.5	78		39.0
SOCI 3P60 0301				0.5		55	27.5
SOCI 3P61 0201				0.5	77		38.5
SOCI 3P65 0201				0.5	77		38.5
SOCI 3P67 0301				0.5		79	39.5
SOCI 3P68 0301				0.5		79	39.5
SOCI 3P70 0201				0.5	40		20.0
SOCI 3P82 0301 +WISE				0.5		78	39.0
SOCI 3P83 0201 +CHYS				0.5	78		39.0
SOCI 3P85 0301				0.5		77	38.5
Year III Total	0.5	72	36.0	10.5	718	806	762.0

2011-12 Course Enrolment

Course (XXXX XXXX 0A0B A-- Duration, B--Section)	Spring/Summer, 2011-12			Fall/Winter, 2011-12			
	FCEs	Registered	FCE Enrolment	FCEs	Nov.1 Registered	Feb. 1 Registered	FCE Enrolment
SOCI 4F01 0101				1.0	2	2	2.0
SOCI 4F80 0101				1.0	14	14	14.0
SOCI 4F90 0101				1.0	2	2	2.0
SOCI 4P22 0201				0.5	20		10.0
SOCI 4P26 0201	+CHSC			0.5	20		10.0
SOCI 4P32 0201	+LABR			0.5	19		9.5
SOCI 4P32 0301	+WISE			0.5		19	9.5
SOCI 4P35 0301	+WISE LABR			0.5		20	10.0
SOCI 4P37 0301				0.5		20	10.0
SOCI 4P51 0201	+WISE			0.5	20		10.0
SOCI 4P51 0202	+WISE			0.5	19		9.5
SOCI 4P53 0301	+WISE LABR			0.5		19	9.5
SOCI 4P57 0201				0.5	20		10.0
SOCI 4P57 0301				0.5		18	9.0
SOCI 4P61 0201				0.5	19		9.5
SOCI 4P65 0301				0.5		19	9.5
SOCI 4P67 0301				0.5		20	10.0
SOCI 4P68 0201	+POLI GEOG			0.5	14		7.0
SOCI 4P70 0201				0.5	20		10.0
SOCI 4P81 0201				0.5	20		10.0
SOCI 4P87 0201				0.5	19		9.5
SOCI 4P87 0301				0.5		17	8.5
SOCI 4P88 0201				0.5	18		9.0
SOCI 4P88 0301				0.5		19	9.5
SOCI 4P89 0301				0.5		16	8.0
SOCI 4P90 0201				0.5	1		0.5
SOCI 4Q41 0301	+WISE			0.5		19	9.5
Year IV Total				15.0	247	224	235.5
Undergraduate Total	0.5	72	36.0	40.0	3,086	3,035	3,060.5
SOCI 5F90 0401		1.0	5	5.0			
SOCI 5F90 1001				1.0	6		6.0
SOCI 5F90 1101				1.0		7	7.0
SOCI 5F91 0401		1.0	6	6.0			
SOCI 5F91 1001				1.0	4		4.0
SOCI 5F91 1101				1.0		4	4.0
SOCI 5P01 0201				0.5	8		4.0
SOCI 5P02 0201				0.5	7		3.5
SOCI 5P20 0201				0.5	3		1.5
SOCI 5P50 0301				0.5		8	4.0
SOCI 5P60 0301				0.5		6	3.0
SOCI 5P95 0201				0.5	1		0.5
SOCI 5P95 0301				0.5		1	0.5
SOCI 5P95 0401		0.5	1	0.5			
Graduate Total	2.5	12	11.5	7.5	29.0	26	38.0
Sociology Total	3.0	84	47.5	47.5	3,115.0	3,061	3,098.5