

FULL-TIME EQUIVALENT (FTE) ENROLMENT: THREE-YEAR SUMMARY

Department: Geography

(Data include ALL sections and ALL enrolment in ALL sessions)

A. UNDERGRADUATE COURSE ENROLMENTS

	2009-10					2010-11					2011-12				
	Fall/Winter			Spring/ Summer	All Sessions	Fall/Winter			Spring/ Summer	All Sessions	Fall/Winter			Spring/ Summer	All Sessions
	Nov. 1st	Feb. 1st	Sub-Total			Nov. 1st	Feb. 1st	Sub-Total			Nov. 1st	Feb. 1st	Sub-Total		
Year I	945	879	912.0	92.0	1004.0	940	887	913.5	56.0	969.5	941	879	910.0	69.0	979.0
Year II	775	532	653.5		653.5	821	389	605.0		605.0	718	381	549.5	2.0	551.5
Year III	293	411	352.0		352.0	253	355	304.0		304.0	272	252	262.0		262.0
Year IV	140	126	133.0		133.0	122	111	116.5		116.5	100	85	92.5		92.5
Total	2,153	1,948	2,050.5	92.0	2,142.5	2,136	1,742	1,939.0	56.0	1,995.0	2,031	1,597	1,814.0	71.0	1,885.0

B. AVERAGE CLASS/SECTION SIZES

	Fall/Winter		Spring/Summer		Average All Sessions	Fall/Winter		Spring/Summer		Average All Sessions	Fall/Winter		Spring/Summer		Average All Sessions
	Sections	Ave.	Sections	Ave.		Sections	Ave.	Sections	Ave.		Sections	Ave.	Sections	Ave.	
Year I	2.0	456.0	1.0	92.0	334.7	2.0	456.8	1.0	56.0	323.2	2.0	455.0	1.0	69.0	326.3
Year II	6.0	108.9			108.9	8.0	75.6			75.6	7.0	78.5	1.5	1.3	64.9
Year III	8.0	44.0			44.0	8.5	35.8			35.8	7.0	37.4			37.4
Year IV	9.5	14.0			14.0	8.5	13.7			13.7	10.0	9.3			9.3
Total:	25.5	80.4	1.0	92.0	80.8	27.0	71.8	1.0	56.0	71.3	26.0	69.8	2.5	28.4	66.1

C. GRADUATE ENROLMENT

	Full-Time	Part-Time	Graduate FTEs
	Nov.	Nov. x .3	
2009-10	11	0.6	11.6
2010-11	11	1.5	12.5
2011-12	10	1.2	11.2

D. TOTAL FTE ENROLMENT

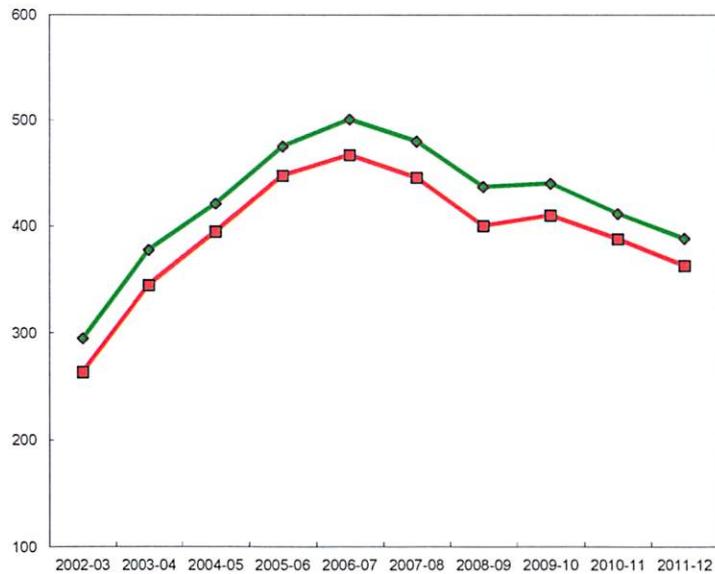
	UNDERGRADUATE FTEs (Course Enrolments/5)						GRADUATE FTEs		TOTAL	% Change from Prev. Year
	Fall/Winter		Spring/Summer		Sub-total		#	%		
	#	%	#	%	#	%				
2009-10	410.1	93.2%	18.4	4.2%	428.5	97.4%	11.60		440.1	
2010-11	387.8	94.2%	11.2	2.7%	399.0	97.0%	12.50	3.0%	411.5	-6.5%
2011-12	362.8	93.5%	14.2	3.7%	377.0	97.1%	11.20	2.9%	388.2	-5.7%

FTE Enrolment, 2011-12

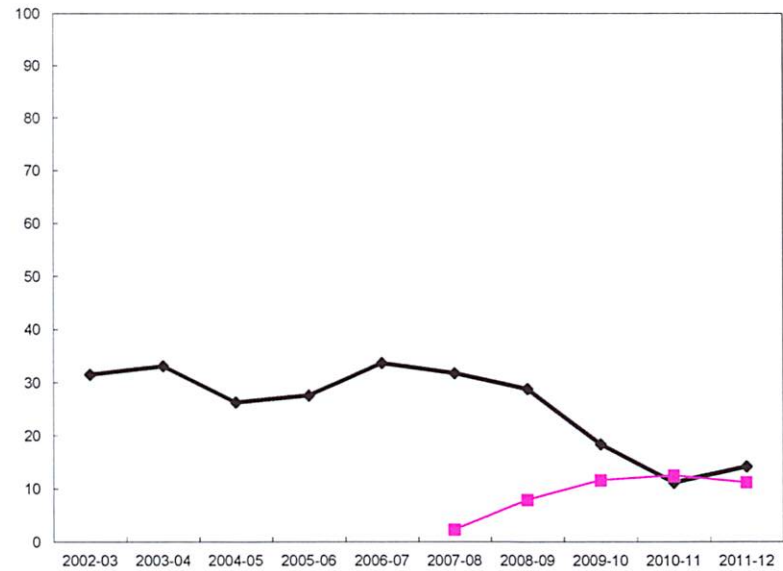
Level	FTEs	%
Year I	195.80	50.4%
Year II	110.30	28.4%
Year III	52.40	13.5%
Year IV	18.50	4.8%
Undergraduate Sub-total	377.00	97.1%
Graduate Sub-total	11.20	2.9%
Grand Total	388.20	100.0%

FTE ENROLMENT Geography

YEAR	Undergraduate				Graduate		TOTAL FTEs	
	Fall/Winter	% Change	SP/SU	% Change	Total	% Change	#	% Change
2002-03	263.3		31.5		294.8			294.8
2003-04	344.4	30.8%	33.1	5.1%	377.5	28.1%		377.5
2004-05	394.9	14.7%	26.3	-20.5%	421.2	11.6%		421.2
2005-06	447.5	13.3%	27.6	4.9%	475.1	12.8%		475.1
2006-07	467.0	4.4%	33.7	22.1%	500.7	5.4%		500.7
2007-08	445.7	-4.6%	31.8	-5.6%	477.5	-4.6%	2.3	479.8
2008-09	400.2	-10.2%	28.8	-9.4%	429.0	-10.2%	7.9	436.9
2009-10	410.1	2.5%	18.4	-36.1%	428.5	-0.1%	11.6	440.1
2010-11	387.8	-5.4%	11.2	-39.1%	399.0	-6.9%	12.5	411.5
2011-12	362.8	-6.4%	14.2	26.8%	377.0	-5.5%	11.2	388.2
10 Yr. Ch.	99.5	37.8%	-17.3	-54.9%	82.2	27.9%	11.2	93.4



■ Fall/Winter ◆ Total



◆ Spring/Summer ■ Graduate

2011-12 Course Enrolment

Course (XXXX XXXX 0A0B A-- Duration, B--Section)	Spring/Summer, 2011-12			Fall/Winter, 2011-12			
	FCEs	Registered	FCE Enrolment	FCEs	Nov.1 Registered	Feb. 1 Registered	FCE Enrolment
GEOG 1F90 0101				1.0	477	451	464.0
GEOG 1F91 0101				1.0	464	428	446.0
GEOG 1F91 0101	1.0	69	69.0				
Year I Total	1.0	69	69.0	2.0	941	879	910.0
GEOG 2C02 0401	0.5	1	0.5				
GEOG 2C03 0201				0.5	1		0.5
GEOG 2C03 0401	0.5	2	1.0				
GEOG 2C04 0301				0.5		1	0.5
GEOG 2C04 0401	0.5	1	0.5				
GEOG 2P01 0201				0.5	79		39.5
GEOG 2P02 0301 +LABR				0.5		74	37.0
GEOG 2P03 0201				0.5	118		59.0
GEOG 2P04 0301 +ERSC				0.5		70	35.0
GEOG 2P06 0301 +PCUL				0.5		119	59.5
GEOG 2P07 0201 +IASC ERSC				0.5	103		51.5
GEOG 2P10 0201				0.5	54		27.0
GEOG 2P11 0301				0.5		18	9.0
GEOG 2P12 0201				0.5	66		33.0
GEOG 2P13 0301				0.5		99	49.5
GEOG 2P50 0201				0.5	281		140.5
GEOG 2P97 0201 +OEVI				0.5	16		8.0
Year II Total	1.5	4	2.0	7.0	718	381	549.5
GEOG 3P04 0301				0.5		35	17.5
GEOG 3P05 0201 +ERSC				0.5	39		19.5
GEOG 3P07 0201 +ERSC				0.5	29		14.5
GEOG 3P12 0201 +OEVI				0.5	26		13.0
GEOG 3P41 0301				0.5		49	24.5
GEOG 3P53 0201				0.5	32		16.0
GEOG 3P56 0201				0.5	14		7.0
GEOG 3P57 0201				0.5	47		23.5
GEOG 3P60 0201				0.5	60		30.0
GEOG 3P69 0201 +PCUL				0.5	13		6.5
GEOG 3P74 0301 +WISE				0.5		59	29.5
GEOG 3P83 0301 +ERSC				0.5		69	34.5
GEOG 3P86 0301				0.5		40	20.0
GEOG 3P95 0201 +ERSC				0.5	12		6.0
Year III Total				7.0	272	252	262.0
GEOG 4F90 0101				1.0	1	1	1.0
GEOG 4F99 0101				1.0	21	21	21.0
GEOG 4P03 0201				0.5	13		6.5
GEOG 4P07 0301 +ERSC				0.5		6	3.0
GEOG 4P12 0201				0.5	6		3.0
GEOG 4P13 0201				0.5	12		6.0
GEOG 4P46 0201				0.5	12		6.0
GEOG 4P51 0301				0.5		9	4.5
GEOG 4P63 0301				0.5		19	9.5
GEOG 4P66 0301				0.5		10	5.0
GEOG 4P70 0201				0.5	15		7.5
GEOG 4P72 0201				0.5	6		3.0
GEOG 4P77 0301				0.5		10	5.0
GEOG 4P83 0201				0.5	11		5.5
GEOG 4P95 0201				0.5	3		1.5
GEOG 4P95 0301				0.5		2	1.0
GEOG 4P96 0301				0.5		2	1.0
GEOG 4P97 0301				0.5		5	2.5
Year IV Total				10.0	100	85	92.5
Undergraduate Total	2.5	73	71.0	26.0	2,031	1,597	1,814.0

2011-12 Course Enrolment

Course (XXXX XXXX 0A0B A-- Duration, B--Section)	Spring/Summer, 2011-12			Fall/Winter, 2011-12			
	FCEs	Registered	FCE Enrolment	FCEs	Nov.1 Registered	Feb. 1 Registered	FCE Enrolment
GEOG 5F90 0401	1.0	10	10.0				
GEOG 5F90 1001				1.0	8		8.0
GEOG 5F90 1101				1.0		7	7.0
GEOG 5F91 0401	1.0	2	2.0				
GEOG 5F91 1001				1.0	2		2.0
GEOG 5F91 1101				1.0		1	1.0
GEOG 5P01 0201				0.5	5		2.5
GEOG 5P02 0201				0.5	3		1.5
GEOG 5P03 0301				0.5		3	1.5
GEOG 5P20 0301				0.5		5	2.5
GEOG 5P30 0301				0.5		2	1.0
GEOG 5P45 0201				0.5	6		3.0
GEOG 5V10 0301				0.5		1	0.5
GEOG 5V10 0401	0.5	2	1.0				
GEOG 5V11 0401	0.5	1	0.5				
Graduate Total	3.0	15	13.5	7.5	24	19	30.5
Geography Total	5.5	88	84.5	33.5	2,055	1,616	1,844.5