

FULL-TIME EQUIVALENT (FTE) ENROLMENT: THREE-YEAR SUMMARY

**Department: History**

(Data include ALL sections and ALL enrolment in ALL sessions)

**A. UNDERGRADUATE COURSE ENROLMENTS**

	2009-10					2010-11					2011-12				
	Fall/Winter			Spring/ Summer	All Sessions	Fall/Winter			Spring/ Summer	All Sessions	Fall/Winter			Spring/ Summer	All Sessions
	Nov. 1st	Feb. 1st	Sub-Total			Nov. 1st	Feb. 1st	Sub-Total			Nov. 1st	Feb. 1st	Sub-Total		
Year I	966	940	953.0	72.0	<b>1025.0</b>	941	913	927.0	72.0	<b>999.0</b>	939	882	910.5	99.0	<b>1009.5</b>
Year II	841	1,045	943.0	17.5	<b>960.5</b>	967	1,086	1,026.5	28.0	<b>1054.5</b>	876	916	896.0	37.5	<b>933.5</b>
Year III	331	351	341.0		<b>341.0</b>	354	340	347.0		<b>347.0</b>	341	312	326.5	36.5	<b>363.0</b>
Year IV	134	166	139.0	1.5	<b>140.5</b>	106	139	122.5	2.5	<b>125.0</b>	71	125	98.0	1.0	<b>99.0</b>
<b>Total</b>	<b>2,272</b>	<b>2,502</b>	<b>2,376.0</b>	<b>91.0</b>	<b>2,467.0</b>	<b>2,368</b>	<b>2,478</b>	<b>2,423.0</b>	<b>102.5</b>	<b>2,525.5</b>	<b>2,227</b>	<b>2,235</b>	<b>2,231.0</b>	<b>174.0</b>	<b>2,405.0</b>

**B. AVERAGE CLASS/SECTION SIZES**

	Fall/Winter		Spring/Summer		Average All Sessions	Fall/Winter		Spring/Summer		Average All Sessions	Fall/Winter		Spring/Summer		Average All Sessions
	Sections	Ave.	Sections	Ave.		Sections	Ave.	Sections	Ave.		Sections	Ave.	Sections	Ave.	
Year I	4.0	238.3	1.0	72.0	<b>205.0</b>	5.0	185.4	1.0	72.0	<b>166.5</b>	5.0	182.1	1.0	99.0	<b>168.3</b>
Year II	10.5	89.8	0.5	35.0	<b>87.3</b>	12.5	82.1	0.5	56.0	<b>81.1</b>	10.5	85.3	1.0	37.5	<b>81.2</b>
Year III	9.5	35.9			<b>35.9</b>	9.5	36.5			<b>36.5</b>	9.0	36.3	0.5	73.0	<b>38.2</b>
Year IV	9.5	14.6	1.0	1.5	<b>13.4</b>	9.5	12.9	1.0	2.5	<b>11.9</b>	7.0	14.0	1.0	1.0	<b>12.4</b>
<b>Total:</b>	<b>33.5</b>	<b>70.9</b>	<b>2.5</b>	<b>36.4</b>	<b>68.5</b>	<b>36.5</b>	<b>66.4</b>	<b>2.5</b>	<b>41.0</b>	<b>64.8</b>	<b>31.5</b>	<b>70.8</b>	<b>3.5</b>	<b>49.7</b>	<b>68.7</b>

**C. GRADUATE ENROLMENT**

	Full-Time	Part-Time	Graduate FTEs
	Nov.	Nov. x .3	
2009-10	13	0.3	13.3
2010-11	13	0.0	13.0
2011-12	15	0.0	15.0

**FTE Enrolment, 2011-12**

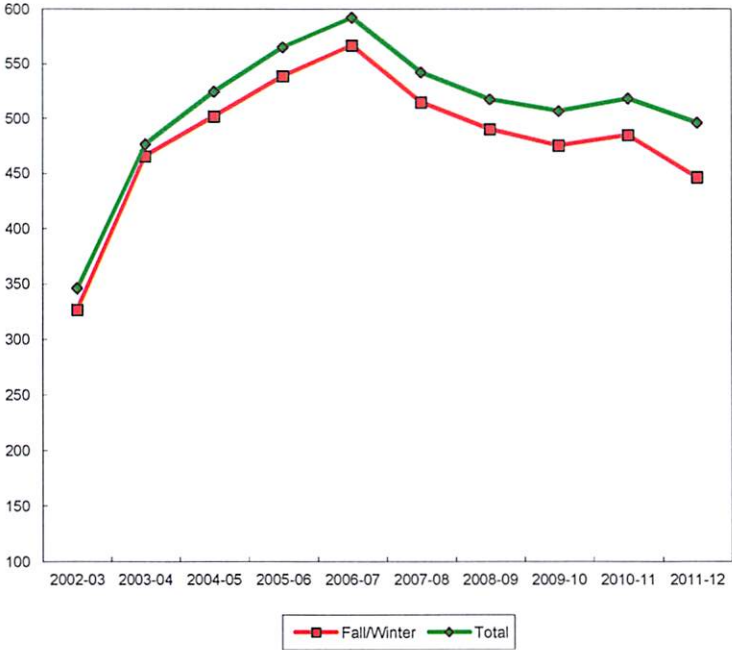
Level	FTEs	%
Year I	201.90	40.7%
Year II	186.70	37.6%
Year III	72.60	14.6%
Year IV	19.80	4.0%
<b>Undergraduate Sub-total</b>	<b>481.00</b>	<b>97.0%</b>
<b>Graduate Sub-total</b>	<b>15.00</b>	<b>3.0%</b>
<b>Grand Total</b>	<b>496.00</b>	<b>100.0%</b>

**D. TOTAL FTE ENROLMENT**

	UNDERGRADUATE FTEs (Course Enrolments/5)						GRADUATE FTEs		TOTAL	% Change from Prev. Year
	Fall/Winter		Spring/Summer		Sub-total		#	%		
	#	%	#	%	#	%				
2009-10	475.2	93.8%	18.2	3.6%	493.4	97.4%	13.30		<b>506.7</b>	
2010-11	484.6	93.5%	20.5	4.0%	505.1	97.5%	13.00	2.5%	<b>518.1</b>	<b>2.2%</b>
2011-12	446.2	90.0%	34.8	7.0%	481.0	97.0%	15.00	3.0%	<b>496.0</b>	<b>-4.3%</b>

### FTE ENROLMENT History

YEAR	Undergraduate				Graduate		TOTAL FTEs	
	Fall/Winter	% Change	SP/SU	% Change	Total	% Change	#	% Change
2002-03	326.6		19.6		346.2			
2003-04	465.5	42.5%	10.9	-44.4%	476.4	37.6%		
2004-05	501.7	7.8%	22.8	109.2%	524.5	10.1%		
2005-06	538.6	7.4%	26.6	16.7%	565.2	7.8%		
2006-07	566.7	5.2%	25.6	-3.8%	592.3	4.8%		
2007-08	514.7	-9.2%	19.4	-24.2%	534.1	-9.8%	8.0	
2008-09	490.1	-4.8%	18.7	-3.6%	508.8	-4.7%	8.6	7.5%
2009-10	475.2	-3.0%	18.2	-2.7%	493.4	-3.0%	13.3	54.7%
2010-11	484.6	2.0%	20.5	12.6%	505.1	2.4%	13.0	-2.3%
2011-12	446.2	-7.9%	34.8	69.8%	481.0	-4.8%	15.0	15.4%
10 Yr. Ch.	119.6	36.6%	15.2	77.6%	134.8	38.9%	15.0	43.3%



**2011-12 Course Enrolment**

Course (XXXX XXXX 0A0B A-- Duration, B--Section)	Spring/Summer, 2011-12			Fall/Winter, 2011-12			
	FCEs	Registered	FCE Enrolment	FCEs	Nov.1 Registered	Feb. 1 Registered	FCE Enrolment
HIST 1F00 0101				1.0	20	20	20.0
HIST 1F90 0101				1.0	196	187	191.5
HIST 1F90 0102				1.0	196	176	186.0
HIST 1F95 0101				1.0	272	261	266.5
HIST 1F95 0101	1.0	99	99.0				
HIST 1F96 0101				1.0	255	238	246.5
<b>Year I Total</b>	<b>1.0</b>	<b>99</b>	<b>99.0</b>	<b>5.0</b>	<b>939</b>	<b>882</b>	<b>910.5</b>
HIST 2P01 0201				0.5	218		109.0
HIST 2P01 0201	0.5	36	18.0				
HIST 2P02 0301				0.5		254	127.0
HIST 2P03 0301	0.5	39	19.5				
HIST 2P04 0301				0.5		80	40.0
HIST 2P08 0201 +MARS				0.5	53		26.5
HIST 2P09 0301				0.5		53	26.5
HIST 2P15 0201				0.5	134		67.0
HIST 2P16 0301				0.5		157	78.5
HIST 2P41 0201				0.5	72		36.0
HIST 2P42 0301				0.5		78	39.0
HIST 2P51 0301				0.5		59	29.5
HIST 2P53 0201				0.5	98		49.0
HIST 2P63 0301 +INTC				0.5		59	29.5
HIST 2P65 0201				0.5	40		20.0
HIST 2P66 0301				0.5		60	30.0
HIST 2P70 0201				0.5	60		30.0
HIST 2P72 0301				0.5		60	30.0
HIST 2P75 0201 +LART				0.5	53		26.5
HIST 2P98 0201				0.5	32		16.0
HIST 2P99 0301 +LART				0.5		56	28.0
HIST 2Q90 0201				0.5	60		30.0
HIST 2Q93 0201 +WISE				0.5	56		28.0
<b>Year II Total</b>	<b>1.0</b>	<b>75</b>	<b>37.5</b>	<b>10.5</b>	<b>876</b>	<b>916</b>	<b>896.0</b>
HIST 3F20 0101				1.0	37	34	35.5
HIST 3P09 0201				0.5	39		19.5
HIST 3P15 0201				0.5	40		20.0
HIST 3P16 0301				0.5		38	19.0
HIST 3P18 0201	0.5	73	36.5				
HIST 3P21 0301				0.5		36	18.0
HIST 3P30 0301				0.5		62	31.0
HIST 3P34 0201				0.5	36		18.0
HIST 3P48 0201				0.5	40		20.0
HIST 3P56 0201				0.5	38		19.0
HIST 3P66 0201				0.5	16		8.0
HIST 3P74 0201				0.5	39		19.5
HIST 3P85 0301				0.5		34	17.0
HIST 3P89 0301				0.5		27	13.5
HIST 3P90 0301				0.5		40	20.0
HIST 3P98 0201				0.5	37		18.5
HIST 3P99 0201				0.5	19		9.5
HIST 3Q94 0301				0.5		41	20.5
<b>Year III Total</b>	<b>0.5</b>	<b>73</b>	<b>36.5</b>	<b>9.0</b>	<b>341</b>	<b>312</b>	<b>326.5</b>

### 2011-12 Course Enrolment

Course (XXXX XXXX 0A0B A-- Duration, B--Section)	Spring/Summer, 2011-12			Fall/Winter, 2011-12			
	FCEs	Registered	FCE Enrolment	FCEs	Nov.1 Registered	Feb. 1 Registered	FCE Enrolment
HIST 4F01 0101				1.0	20	20	20.0
HIST 4P08 0301				0.5		22	11.0
HIST 4P10 0301				0.5		20	10.0
HIST 4P26 0201				0.5	5		2.5
HIST 4P33 0301				0.5		19	9.5
HIST 4P36 0301				0.5		18	9.0
HIST 4P44 0301				0.5		20	10.0
HIST 4P48 0201				0.5	8		4.0
HIST 4P50 0201				0.5	2		1.0
HIST 4P57 0201				0.5	19		9.5
HIST 4P64 0201				0.5	14		7.0
HIST 4P99 0201				0.5	3		1.5
HIST 4P99 0201	0.5	1	0.5				
HIST 4P99 0301				0.5		6	3.0
HIST 4P99 0301	0.5	1	0.5				
<b>Year IV Total</b>	<b>1.0</b>	<b>2</b>	<b>1.0</b>	<b>7.0</b>	<b>71</b>	<b>125</b>	<b>98.0</b>
<b>Undergraduate Total</b>	<b>3.5</b>	<b>249</b>	<b>174.0</b>	<b>31.5</b>	<b>2,227</b>	<b>2,235</b>	<b>2,231.0</b>
HIST 5F01 0101				1.0	15	15	15.0
HIST 5F80 0401	1.0	12	12.0				
HIST 5F80 1001				1.0	14		14.0
HIST 5F80 1101				1.0		15	15.0
HIST 5P80 0201				0.5	1		0.5
HIST 5P80 0301				0.5		1	0.5
HIST 5V00 0201				0.5	14		7.0
HIST 5V03 0301				0.5		11	5.5
HIST 5V12 0301				0.5		11	5.5
HIST 5V52 0301				0.5		9	4.5
HIST 5V60 0201				0.5	7		3.5
HIST 5V71 0201				0.5	12		6.0
<b>Graduate Total</b>	<b>1.0</b>	<b>12</b>	<b>12.0</b>	<b>7.0</b>	<b>63</b>	<b>62</b>	<b>77.0</b>
<b>History Total</b>	<b>4.5</b>	<b>261</b>	<b>186.0</b>	<b>38.5</b>	<b>2,290</b>	<b>2,297</b>	<b>2,308.0</b>