

FULL-TIME EQUIVALENT (FTE) ENROLMENT: THREE-YEAR SUMMARY
Department: Recreation & Leisure Studies
 (Data include ALL sections and ALL enrolment in ALL sessions)

A. UNDERGRADUATE COURSE ENROLMENTS

	2009-10					2010-11					2011-12				
	Fall/Winter			Spring/ Summer	All Sessions	Fall/Winter			Spring/ Summer	All Sessions	Fall/Winter			Spring/ Summer	All Sessions
	Nov. 1st	Feb. 1st	Sub-Total			Nov. 1st	Feb. 1st	Sub-Total			Nov. 1st	Feb. 1st	Sub-Total		
Year I	101	524	312.5	37.5	350.0	124	423	273.5	32.0	305.5	124	119	121.5	79.5	201.0
Year II	351	478	414.5	7.0	421.5	232	363	297.5		297.5	382	297	339.5	7.5	347.0
Year III	489	279	384.0	36.0	420.0	422	339	380.5	32.5	413.0	245	366	305.5	32.0	337.5
Year IV	160	213	186.5	11.0	197.5	304	183	243.5	36.0	279.5	184	316	250.0	28.0	278.0
Total	1,101	1,494	1,297.5	91.5	1,389.0	1,082	1,308	1,195.0	100.5	1,295.5	935	1,098	1,016.5	147.0	1,163.5

B. AVERAGE CLASS/SECTION SIZES

	Fall/Winter		Spring/Summer		Average All Sessions	Fall/Winter		Spring/Summer		Average All Sessions	Fall/Winter		Spring/Summer		Average All Sessions
	Sections	Ave.	Sections	Ave.		Sections	Ave.	Sections	Ave.		Sections	Ave.	Sections	Ave.	
Year I	2.5	125.0	0.5	75.0	116.7	2.0	136.8	0.5	64.0	122.2	1.0	121.5	0.5	159.0	134.0
Year II	4.5	92.1	0.5	14.0	84.3	4.5	66.1			66.1	4.5	75.4	0.5	15.0	69.4
Year III	9.0	42.7	2.5	14.4	36.5	8.0	47.6	2.0	16.3	41.3	8.0	38.2	3.0	10.7	30.7
Year IV	10.0	18.7	3.0	3.7	15.2	10.5	23.2	4.0	9.0	19.3	9.0	27.8	2.0	14.0	25.3
Total:	26.0	49.9	6.5	14.1	42.7	25.0	47.8	6.5	15.5	41.1	22.5	45.2	6.0	24.5	40.8

C. GRADUATE ENROLMENT*

	Full-Time	Part-Time	Graduate FTEs
	Nov.	Nov. x .3	
2009-10			
2010-11			
2011-12			

D. TOTAL FTE ENROLMENT

	UNDERGRADUATE FTEs (Course Enrolments/5)						GRADUATE*		TOTAL	% Change from Prev. Year
	Fall/Winter		Spring/Summer		Sub-total		FTEs			
	#	%	#	%	#	%	#	%		
2009-10	259.5	93.4%	18.3	6.6%	277.8	100.0%			277.8	
2010-11	239.0	92.2%	20.1	7.8%	259.1	100.0%			259.1	-6.7%
2011-12	203.3	87.4%	29.4	12.6%	232.7	100.0%			232.7	-10.2%

*FAHS Graduates are reported under the Faculty only

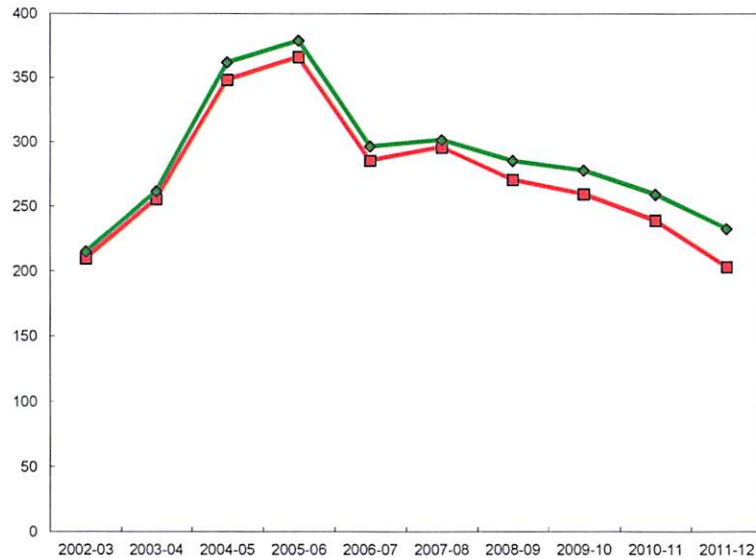
FTE Enrolment, 2011-12

Level	FTEs	%
Year I	40.20	17.3%
Year II	69.40	29.8%
Year III	67.50	29.0%
Year IV	55.60	23.9%
Undergraduate Sub-total	232.70	100.0%
Graduate Sub-total	0.00	0.0%
Grand Total	232.70	100.0%

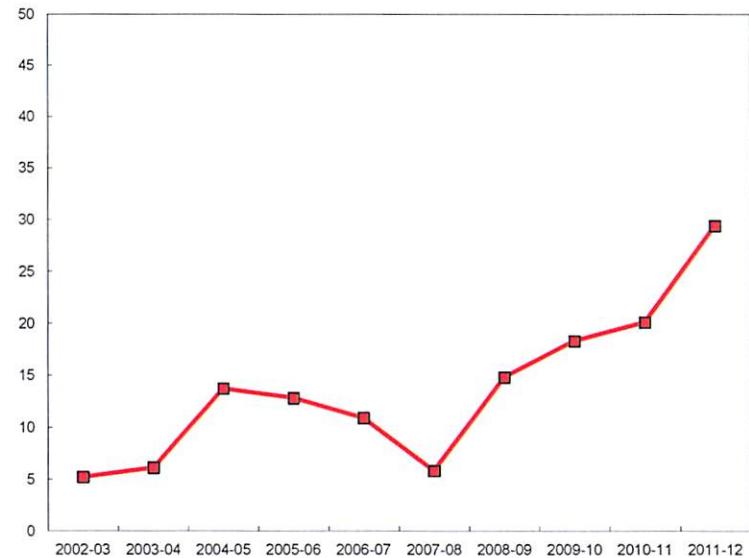
FTE ENROLMENT
Recreation and Leisure Studies

YEAR	Undergraduate				Graduate*		TOTAL FTEs		
	Fall/Winter	% Change	SP/SU	% Change	Total	% Change	#	% Change	
2002-03	209.8	17.3%	5.2	642.9%	215.0	19.7%		215.0	21.4%
2003-04	255.5	21.8%	6.1	17.3%	261.6	21.7%		261.6	22.1%
2004-05	348.2	36.3%	13.7	124.6%	361.9	38.3%		361.9	36.7%
2005-06	366.2	5.2%	12.8	-6.6%	379.0	4.7%		379.0	4.5%
2006-07	285.5	-22.0%	10.9	-14.8%	296.4	-21.8%		296.4	-20.3%
2007-08	295.7	3.6%	5.8	-46.8%	301.5	1.7%		301.5	1.7%
2008-09	270.5	-8.5%	14.8	155.2%	285.3	-5.4%		285.3	-5.4%
2009-10	259.5	-4.1%	18.3	23.6%	277.8	-2.6%		277.8	-2.6%
2010-11	239.0	-7.9%	20.1	9.8%	259.1	-6.7%		259.1	-6.7%
2011-12	203.3	-14.9%	29.4	46.3%	232.7	-10.2%		232.7	-10.2%
10 Yr. Ch.	-6.5	-3.1%	24.2	465.4%	17.7	8.2%		17.7	8.2%

* Graduate are reported under FAHS Only



Legend: Fall/Winter Ug (Red line with square markers), Total (Green line with diamond markers)



Legend: Spring/Summer (Red line with square markers)

Note: Tourism Removed starting in 2006-07

2011-12 Course Enrolment

Course (XXXX XXXX 0A0B A- Duration, B-Section)	Spring/Summer, 2011-12			Fall/Winter, 2011-12			
	FCEs	Registered	FCE Enrolment	FCEs	Nov.1 Registered	Feb. 1 Registered	FCE Enrolment
RECL 1F91 0101				1.0	124	119	121.5
RECL 1P03 0102	0.5	159	79.5				
Year I Total	0.5	159	79.5	1.0	124	119	121.5
RECL 2F16 0101				1.0	9	9	9.0
RECL 2P00 0201				0.5	86		43.0
RECL 2P02 0201				0.5	19		9.5
RECL 2P05 0301				0.5		66	33.0
RECL 2P07 0201				0.5	139		69.5
RECL 2P11 0301				0.5		131	65.5
RECL 2P21 0201				0.5	129		64.5
RECL 2P62 0201	0.5	15	7.5				
RECL 2P62 0301				0.5		91	45.5
Year II Total	0.5	15	7.5	4.5	382	297	339.5
RECL 3P00 0201				0.5	1		0.5
RECL 3P00 0301				0.5		1	0.5
RECL 3P00 0301	0.5	2	1.0				
RECL 3P04 0301				0.5		46	23.0
RECL 3P11 0201	0.5	13	6.5				
RECL 3P11 0301				0.5		81	40.5
RECL 3P24 0201				0.5	60		30.0
RECL 3P25 0201				0.5	61		30.5
RECL 3P30 0301				0.5		36	18.0
RECL 3P32 0301				0.5		40	20.0
RECL 3P35 0302				0.5		9	4.5
RECL 3P36 0301				0.5		36	18.0
RECL 3P45 0301				0.5		46	23.0
RECL 3P62 0201				0.5	40		20.0
RECL 3P70 0301				0.5		28	14.0
RECL 3P76 0201				0.5	43		21.5
RECL 3P86 0801	0.5	25	12.5				
RECL 3Q07 0301				0.5		43	21.5
RECL 3Q17 0201				0.5	40		20.0
RECL 3Q17 0301	0.5	13	6.5				
RECL 3Q46 0201	0.5	1	0.5				
RECL 3V92 0301	0.5	10	5.0				
Year III Total	3.0	64	32.0	8.0	245	366	305.5
RECL 4F02 0101				1.0	9	9	9.0
RECL 4F02 0101	1.0	26	26.0				
RECL 4F15 0101				1.0	49	45	47.0
RECL 4F17 0101				1.0	27	27	27.0
RECL 4F22 0101				1.0	43	43	43.0
RECL 4F25 0101	1.0	2	2.0				
RECL 4F26 0101				1.0	1	1	1.0
RECL 4P00 0301				0.5		3	1.5
RECL 4P05 0301				0.5		26	13.0
RECL 4P10 0201				0.5	27		13.5
RECL 4P16 0301				0.5		25	12.5
RECL 4P21 0301				0.5		85	42.5
RECL 4P51 0301				0.5		33	16.5
RECL 4P96 0201				0.5	28		14.0
RECL 4Q96 0301				0.5		19	9.5
Year IV Total	2.0	28	28.0	9.0	184	316	250.0
Recreation&Leisure Studies Total	6.0	266	147.0	22.5	935	1,098	1,016.5