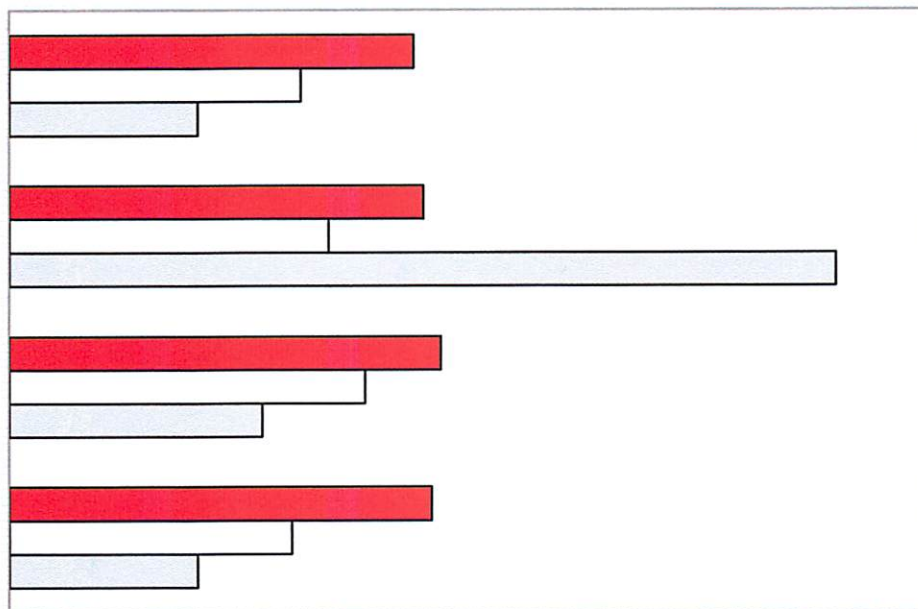


Brock University

Full-Time Equivalent (FTE) Enrolment

2011-2012

Summary Data



Executive Summary

- Total FTE enrolment has increased from 15,905.1 in 2010-11 to 16,386.9 in 2011-12, an increase of **481.8 or 3.0%**. The total FTE enrollment in 2011-12 is the highest in Brock's history.
 - Graduate FTE enrolment has slightly increased from 1,113.2 in 2010-11 to 1,179.8 in 2011-12, an increase of **66.6 FTEs or 6.0%**.
 - Undergraduate FTE enrolment has increased from 14,791.9 in 2010-11 to 15,207.1 in 2011-12, an increase of **415.2 or 2.8%**. Undergraduate FTE enrollment in 2011-12 is the highest in Brock's history.
 - **The proportion of graduate students** as measured by the percentage of graduate FTE enrolment over total FTE enrollment **has slightly increased from 7.0% in 2010-11 to 7.2% in 2011-12.**
 - The total number of undergraduate course FCE (Full Course Equivalent) sections has increased from 1,608.25 in 2010-11 to 1,628.25 in 2011-12, **an increase of 20 or 1.2%**; Total number of undergraduate FCE Enrollment had increased from 73,959.625 in 2010-11 to 76,035.5 in 2011-12, **an increase of 2,075.875 or 2.8%**.
 - Related to the above, **the Fall/Winter average undergraduate class size has increased from 54.5 in 2010-11 to 55.8 in 2011-12, an increase of about 2 students per class section.**
 - **The biggest increase in average class size** from 2010-11 to 2011-12 occurred in **Year Four courses.**
-