



Connecting to BrockSecure on Windows XP

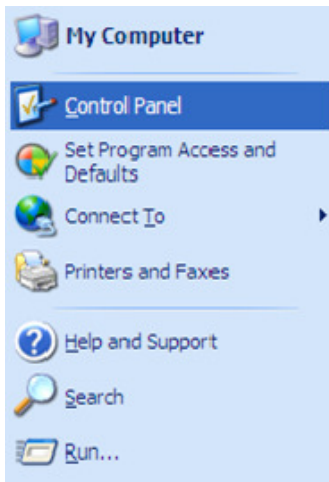
Date: September 30, 2009

Version: 1.0

Configuring BrockSecure on Windows XP

Windows XP will automatically search for any available wireless connections when you power on your wireless network card. If a wireless connection has been found, Windows XP will inform you that a connection has been made. But you will still need to set up the PEAP configuration.

Click on Start, click Control Panel



In the Control Panel, double click on Network Connections.





Connecting to BrockSecure on Windows XP

Date: September 30, 2009

Version: 1.0

The Network Connections box shows up. Right click your Wireless Network Connection icon and click on Properties.





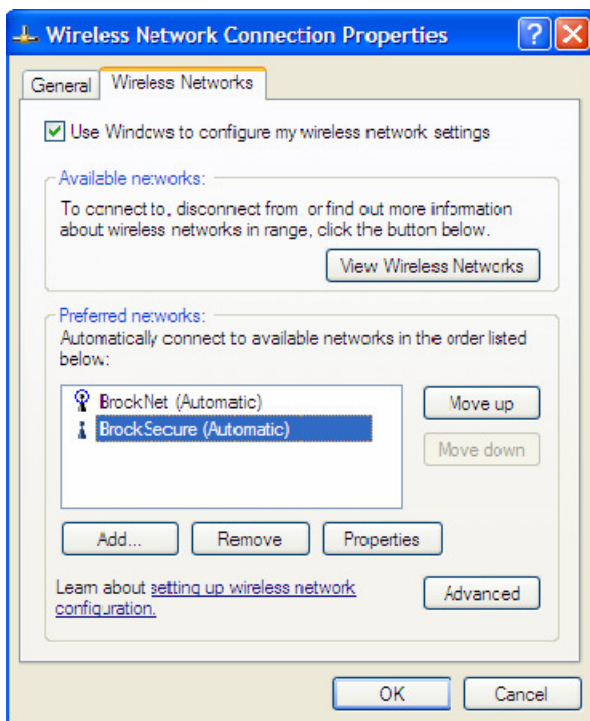
Connecting to BrockSecure on Windows XP

Date: September 30, 2009

Version: 1.0

The Wireless Connection Properties box pops up. Make sure that Use Windows to configure my wireless network settings is checked. Select BrockSecure and click on Properties.

Note: If you do not see BrockSecure, then click the Add button and follow the next steps.





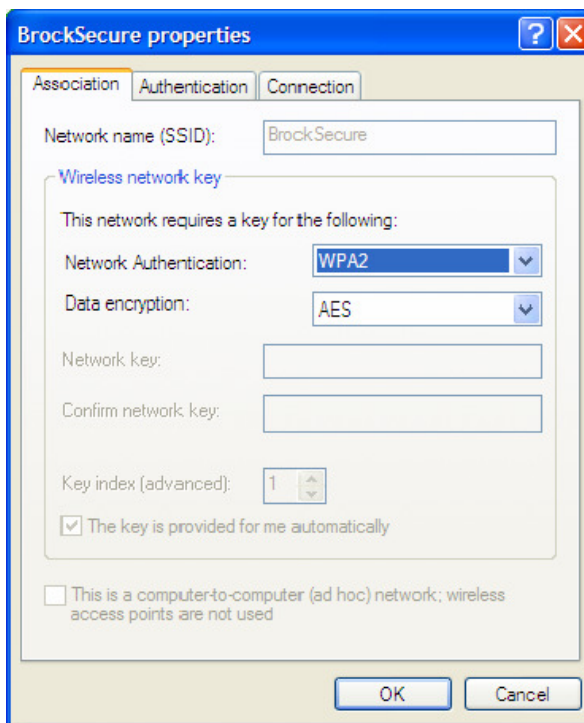
Connecting to BrockSecure on Windows XP

Date: September 30, 2009

Version: 1.0

The Wireless Network Properties box shows up. Make sure the following settings are correct: Network Name (SSID): BrockSecure Network Authentication: WPA2 Data Encryption: AES

Note: If you do not have the WPA2 option. You can download it from the Microsoft website by searching WPA2 driver download. Downloading the driver requires Windows validation; if you do not have a valid copy of Windows you will not be able to download the correct driver and thus not be able to use BrockSecure.





Connecting to BrockSecure on Windows XP

Date: September 30, 2009

Version: 1.0

Click on the Authentication tab.

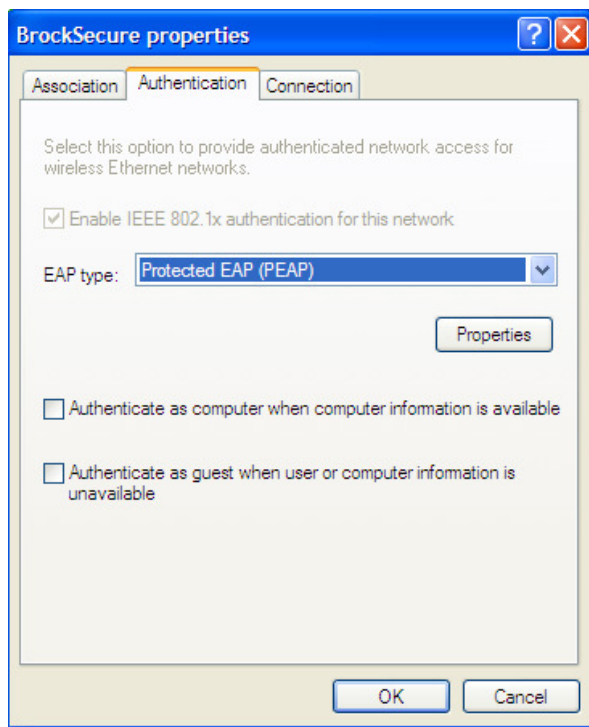
Make sure that Enable IEEE 802.1x authentication for this network is checked.

The EAP Type is: Protected EAP (PEAP) "Protected Extensible Authentication Protocol"

Authenticate as computer when computer information is available is not checked.

Authenticate as guest when user or computer information is unavailable is not checked.

Under the EAP Type, click on Properties.





Connecting to BrockSecure on Windows XP

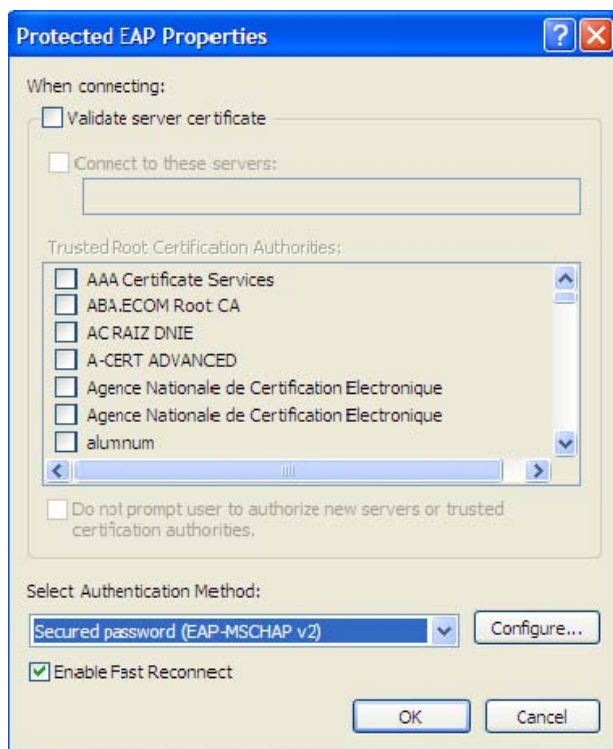
Date: September 30, 2009

Version: 1.0

The Protected EAP Properties box pops up. Make sure the following settings are configured:

Make sure that the Selected Authentication method is Secure password (EAPMSCHAP v2) and that there are no checkmarks for any of the options. Enable Fast Reconnect is optional.

Click on the Configure button to continue.





Connecting to BrockSecure on Windows XP

Date: September 30, 2009

Version: 1.0

The EAP MSCHAP v2 Properties box pops up. Make sure to uncheck Automatically use my Windows logon name and password (and domain if any).



Click OK to close all the boxes.

Login to the BrockSecure Wireless Network

After a couple of seconds up to a minute, in the system tray (at the bottom right corner of the screen), you will see the following:



Click on the Yellow Information box and the Enter Credentials login box pops up. In the Login box, type in your portal login name and password. Click OK to connect to the network.



Connecting to BrockSecure on Windows XP

Date: September 30, 2009

Version: 1.0



To Ensure that it is connected, go to Start > Control Panel. When Control Panel pops up, double click on Network Connections. Look at the icon that indicates the wireless connection. If it indicates Authentication Succeeded under the icon, you are connected properly. If it indicates Validating Credentials, just wait for a while and it should change status to successfully logged on.

Additional Information

Please note that the login information used for connecting is automatically stored onto the Operating System. This means that if you successfully connect to the network, then every time you reboot your machine, Windows XP will try to connect you to the secure network automatically with the correct information. You do not have to retype your login information in order to gain access. NOTE: Since your login information is being stored on the local drive, your friends will be able to log onto the wireless network as you if you loan them your laptop. You will also need to change your password if the laptop has been stolen or lost to ensure security access on your account to the secure wireless network.

If you have problems authenticating on the BrockSecure Wireless Network, please contact the ITS Help Desk 905-688-5550 x4357