

FULL-TIME EQUIVALENT (FTE) ENROLMENT: THREE-YEAR SUMMARY

Department: Applied Linguistics

(Data include ALL sections and ALL enrolment in ALL sessions)

A. UNDERGRADUATE COURSE ENROLMENTS

	2008-09					2009-10					2010-11				
	Fall/Winter			Spring/ Summer	All Sessions	Fall/Winter			Spring/ Summer	All Sessions	Fall/Winter			Spring/ Summer	All Sessions
	Nov. 1st	Feb. 1st	Sub-Total			Nov. 1st	Feb. 1st	Sub-Total			Nov. 1st	Feb. 1st	Sub-Total		
Year I	650	624	637.0	20.0	657.0	689	643	666.0		666.0	584	572	578.0	13.0	591.0
Year II	233	229	231.0		231.0	344	217	280.5		280.5	401	245	323.0		323.0
Year III	328	276	302.0		302.0	315	266	290.5		290.5	370	317	343.5		343.5
Year IV	142	120	131.0	1.0	132.0	166	182	174.0	1.0	175.0	168	182	167.75	2.5	170.3
Total	1,353	1,249	1,301.0	21.0	1,322.0	1,514	1,308	1,411.0	1.0	1,412.0	1,523	1,316	1,412.25	15.5	1,427.8

B. AVERAGE CLASS/SECTION SIZES

	Fall/Winter		Spring/Summer		Average All Sessions	Fall/Winter		Spring/Summer		Average All Sessions	Fall/Winter		Spring/Summer		Average All Sessions
	Sections	Ave.	Sections	Ave.		Sections	Ave.	Sections	Ave.		Sections	Ave.	Sections	Ave.	
Year I	9.0	70.8	0.5	40.0	69.2	10.0	66.6			66.6	10.0	57.8	0.5	26.0	56.3
Year II	4.0	57.8			57.8	4.5	62.3			62.3	5.5	58.7			58.7
Year III	5.5	54.9			54.9	5.5	52.8			52.8	6.0	57.3			57.3
Year IV	8.5	15.4	0.5	2.0	14.7	9.0	19.3	0.5	2.0	18.4	9.5	17.7	1.0	2.5	16.2
Total:	27.0	48.2	1.0	21.0	47.2	29.0	48.7	0.5	2.0	47.9	31.0	45.6	1.5	10.3	43.9

C. GRADUATE ENROLMENT

	Full-Time	Part-Time	Graduate FTEs
	Nov.	Nov. x .3	
2008-09	14	0.6	14.6
2009-10	15	0.9	15.9
2010-11	16	0.9	16.9

D. TOTAL FTE ENROLMENT

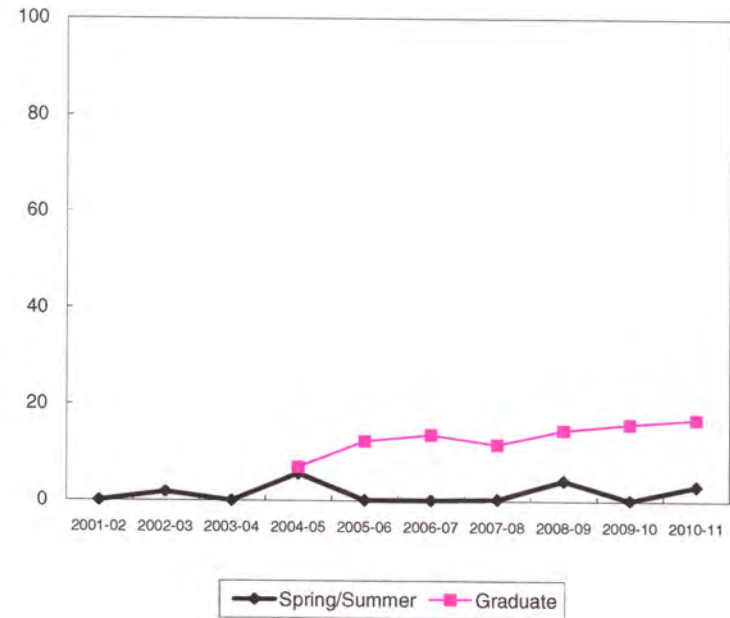
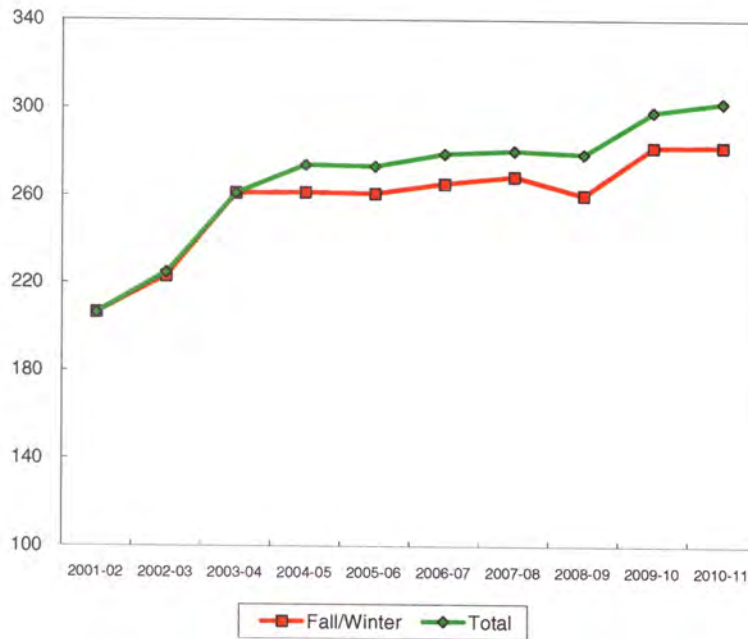
	UNDERGRADUATE FTEs (Course Enrolments/5)						GRADUATE FTEs		TOTAL	% Change from Prev. Year
	Fall/Winter		Spring/Summer		Sub-total		#	%		
	#	%	#	%	#	%				
2008-09	260.2	93.3%	4.2	1.5%	264.4	94.8%	14.6	5.2%	279.0	
2009-10	282.2	94.6%	0.2	0.1%	282.4	94.7%	15.9	5.3%	298.3	6.9%
2010-11	282.5	93.4%	3.1	1.0%	285.6	94.4%	16.9	5.6%	302.5	1.4%

FTE Enrolment, 2010-11

Level	FTEs	%
Year I	118.2	39.1%
Year II	64.6	21.4%
Year III	68.7	22.7%
Year IV	34.1	11.3%
Undergraduate Sub-total	285.6	94.4%
Graduate Sub-total	16.9	5.6%
Grand Total	302.5	100.0%

FTE ENROLMENT
Applied Linguistics

YEAR	Undergraduate					Graduate		TOTAL FTEs		
	Fall/Winter	% Change	SP/SU	% Change	Total	% Change	#	% Change	#	% Change
2001-02	206.4		0.0		206.4				206.4	
2002-03	223.0	8.0%	1.8		224.8	8.9%			224.8	8.9%
2003-04	261.1	17.1%	0.0		261.1	16.1%			261.1	16.1%
2004-05	261.4	0.1%	5.6		267.0	2.3%	6.9		273.9	4.9%
2005-06	260.9	-0.2%	0.1		261.0	-2.2%	12.3	78.3%	273.3	-0.2%
2006-07	265.4	1.7%	0.1		265.5	1.7%	13.6	10.6%	279.1	2.1%
2007-08	268.6	1.2%	0.3		268.9	1.3%	11.6	-14.7%	280.5	0.5%
2008-09	260.2	-3.1%	4.2		264.4	-1.7%	14.6	25.9%	279.0	-0.5%
2009-10	282.2	8.5%	0.2		282.4	6.8%	15.9	8.9%	298.3	6.9%
2010-11	282.5	0.1%	3.1		285.6	1.1%	16.9	6.3%	302.5	1.4%
10 Yr. Ch.	76.1	36.8%	3.1		79.2	38.3%	16.9		96.1	46.5%



2010-11 Course Enrolment

Course (XXXX XXXX 0A0B A-- Duration, B--Section)	Spring/Summer, 2010-11			Fall/Winter, 2010-11			
	FCEs	Registered	FCE	FCEs	Nov.1	Feb. 1	FCE
AESL 1P92 0201				0.5	19		9.5
AESL 1P92 0201	0.5	26	13.0				
AESL 1P92 0202				0.5	22		11.0
AESL 1P92 0203				0.5	14		7.0
AESL 1P92 0301				0.5		25	12.5
AESL 1P92 0302				0.5		14	7.0
AESL 1P92 0303				0.5		18	9.0
LING 1F25 0101				1.0	138	132	135.0
LING 1F94 0101				1.0	137	129	133.0
LING 1F94 0102				1.0	1	1	1.0
LING 1P00 0201				0.5	40		20.0
LING 1P00 0202				0.5	40		20.0
LING 1P01 0301				0.5		31	15.5
LING 1P01 0302				0.5		32	16.0
LING 1P92 0201				0.5	171		85.5
LING 1P92 0202				0.5	2		1.0
LING 1P93 0301				0.5		187	93.5
LING 1P93 0302				0.5		3	1.5
Year I Total	0.5	26	13.0	10.0	584	572	578.0
LING 2P01 0201				0.5	17		8.5
LING 2P02 0302				0.5		8	4.0
LING 2P10 0201				0.5	121		60.5
LING 2P50 0201				0.5	79		39.5
LING 2P50 0202				0.5	13		6.5
LING 2P53 0301				0.5		64	32.0
LING 2P72 0201			INTC	0.5	94		47.0
LING 2P90 0201				0.5	77		38.5
LING 2P91 0301				0.5		72	36.0
LING 2P99 0301			CHYS	0.5		100	50.0
LING 2P99 0302				0.5		1	0.5
Year II Total				5.5	401	245	323.0
LING 3P51 0301				0.5		65	32.5
LING 3P61 0201			PSYC CHYS	0.5	119		59.5
LING 3P61 0202				0.5	1		0.5
LING 3P71 0301				0.5		59	29.5
LING 3P90 0301				0.5		76	38.0
LING 3P91 0201				0.5	20		10.0
LING 3P93 0301			WISE	0.5		59	29.5
LING 3P94 0201				0.5	61		30.5
LING 3P95 0301				0.5		58	29.0
LING 3P97 0201				0.5	64		32.0
LING 3Q91 0201			PSYC	0.5	53		26.5
LING 3Q93 0201				0.5	52		26.0
Year III Total				6.0	370	317	343.5
LING 4F01 0101				1.0	3	3	3.0
LING 4P10 0301				0.5		24	12.0
LING 4P20 0301				0.5		48	24.0
LING 4P21 0201				0.5	43		21.5
LING 4P25 0201				0.5	8		4.0
LING 4P25 0301				0.5		1	0.5
LING 4P25 0401	0.5	4	2.0				
LING 4P27 0201				0.5	37		18.5
LING 4P31 0301				0.5		28	14.0
LING 4P32 0201				0.5	25		12.5
LING 4P35 0301				0.5		22	11.0
LING 4P40 0301				0.5		17	8.5
LING 4P41 0201				0.5	18		9.0
LING 4P80 0101				0.5	15	14	7.25
LING 4P81 0301				0.5		5	2.5
LING 4P82 0201				0.5	18		9.0
LING 4P83 0301				0.5		17	8.5
LING 4P99 0101	0.5	1	0.5				
LING 4P99 0201				0.5	1		0.5
LING 4P99 0301				0.5		3	1.5
Year IV Total	1.0	5	2.5	9.5	168	182	167.75
Undergraduate Total	1.5	31	15.5	31.0	1,523	1,316	1,412.25

2010-11 Course Enrolment

Course (XXXX XXXX 0A0B A-- Duration, B--Section)	Spring/Summer, 2010-11			Fall/Winter, 2010-11			
	FCEs	Registered	FCE	FCEs	Nov.1	Feb. 1	FCE
LING 5F89 0401	1.0	13	13.0				
LING 5F89 1001				1.0	4		4.0
LING 5F90 0401	1.0	1	1.0				
LING 5F90 1001				1.0	1		1.0
LING 5F90 1101				1.0		1	1.0
LING 5P01 0301				0.5		15	7.5
LING 5P02 0301				0.5		15	7.5
LING 5P03 0201				0.5	14		7.0
LING 5P04 0301				0.5		16	8.0
LING 5P05 0201				0.5	13		6.5
LING 5P07 0201				0.5	13		6.5
LING 5P85 0201				0.5	13		6.5
Graduate Total	2.0	14	14.0	6.5	58	47	55.5
Applied Linguistics Total	3.5	45	29.5	37.5	1,581	1,363	1,467.75