

FULL-TIME EQUIVALENT (FTE) ENROLMENT: THREE-YEAR SUMMARY

**Department: Classics**

(Data include ALL sections and ALL enrolment in ALL sessions)

**A. UNDERGRADUATE COURSE ENROLMENTS**

	2008-09					2009-10					2010-11				
	Fall/Winter			Spring/ Summer	All Sessions	Fall/Winter			Spring/ Summer	All Sessions	Fall/Winter			Spring/ Summer	All Sessions
	Nov. 1st	Feb. 1st	Sub-Total			Nov. 1st	Feb. 1st	Sub-Total			Nov. 1st	Feb. 1st	Sub-Total		
Year I	815	813	814.0		<b>814.0</b>	862	837	849.5		<b>849.5</b>	833	822	827.5	84.0	<b>911.5</b>
Year II	210	135	172.5		<b>172.5</b>	186	226	206.0		<b>206.0</b>	107	173	140.0		<b>140.0</b>
Year III	218	177	197.5	8.0	<b>205.5</b>	174	163	168.5	12.0	<b>180.5</b>	276	293	284.5	14.0	<b>298.5</b>
Year IV	29	36	32.5		<b>32.5</b>	49	50	49.5	0.5	<b>50.0</b>	38	37	37.5		<b>37.5</b>
Total	1,272	1,161	1,216.5	8.0	<b>1,224.5</b>	1,271	1,276	1,273.5	12.5	<b>1,286.0</b>	1,254	1,325	1,289.5	98.0	<b>1,387.5</b>

**B. AVERAGE CLASS/SECTION SIZES**

	Fall/Winter		Spring/Summer		Average All Sessions	Fall/Winter		Spring/Summer		Average All Sessions	Fall/Winter		Spring/Summer		Average All Sessions
	Sections	Ave.	Sections	Ave.		Sections	Ave.	Sections	Ave.		Sections	Ave.	Sections	Ave.	
Year I	5.0	162.8			<b>162.8</b>	5.0	169.9			<b>169.9</b>	5.0	165.5	1.0	84.0	<b>151.9</b>
Year II	4.5	38.3			<b>38.3</b>	5.0	41.2			<b>41.2</b>	3.5	40.0			<b>40.0</b>
Year III	6.0	32.9	2.0	4.0	<b>25.7</b>	3.5	48.1	1.0	12.0	<b>40.1</b>	6.0	47.4	1.0	14.0	<b>42.6</b>
Year IV	3.0	10.8			<b>10.8</b>	4.5	11.0	0.5	1.0	<b>10.0</b>	4.0	9.4			<b>9.4</b>
Total:	18.5	65.8	2.0	4.0	<b>59.7</b>	18.0	70.8	1.5	8.3	<b>65.9</b>	18.5	69.7	2.0	49.0	<b>67.7</b>

**C. GRADUATE ENROLMENT**

	Full-Time	Part-Time	Graduate FTEs
	Nov.	Nov. x .3	
2008-09	11		<b>11.0</b>
2009-10	13		<b>13.0</b>
2010-11	9		<b>9.0</b>

**D. TOTAL FTE ENROLMENT**

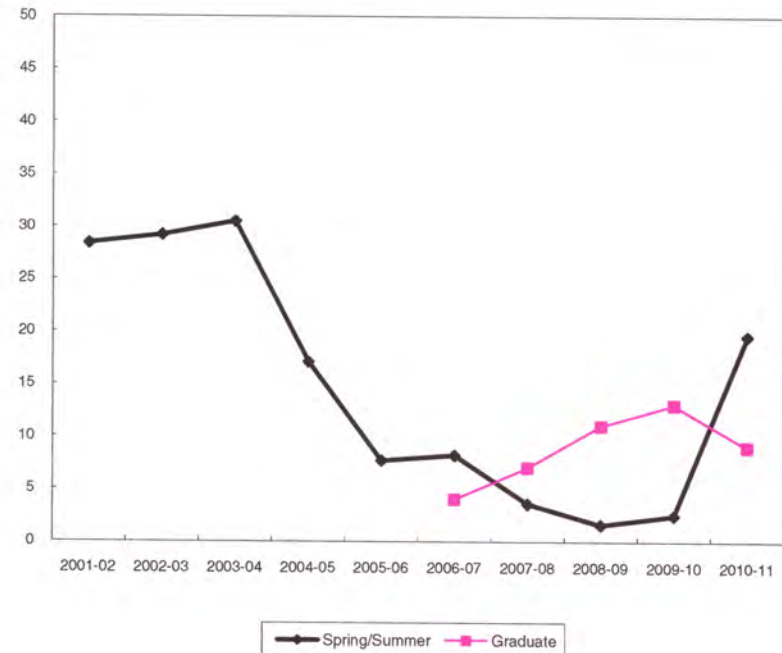
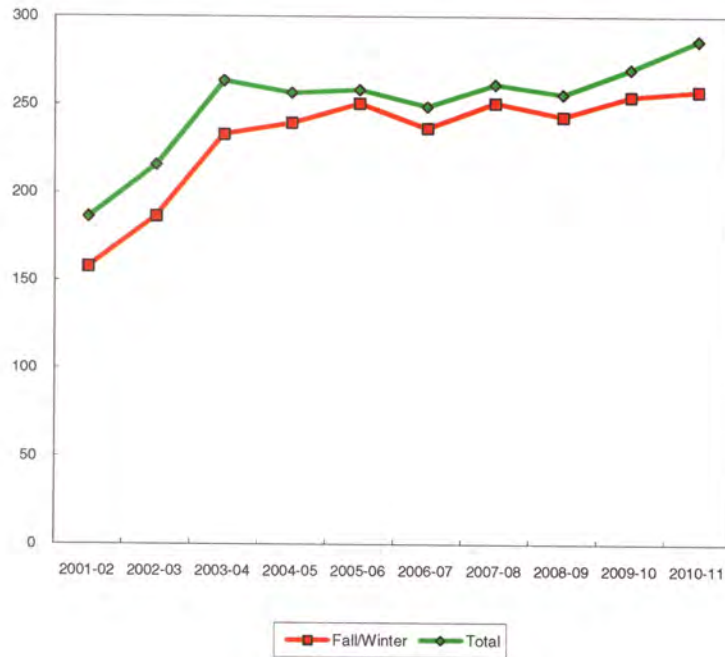
	UNDERGRADUATE FTEs (Course Enrolments/5)						GRADUATE FTEs		TOTAL	% Change from Prev. Year
	Fall/Winter		Spring/Summer		Sub-total		#	%		
	#	%	#	%	#	%				
2008-09	243.3	95.1%	1.6	0.6%	244.9	95.7%	11.00	4.3%	<b>255.9</b>	
2009-10	254.7	94.3%	2.5	0.9%	257.2	95.2%	13.00	4.8%	<b>270.2</b>	<b>5.6%</b>
2010-11	257.9	90.0%	19.6	6.8%	277.5	96.9%	9.00	3.1%	<b>286.5</b>	<b>6.0%</b>

**FTE Enrolment, 2010-11**

Level	FTEs	%
Year I	182.3	63.6%
Year II	28.0	9.8%
Year III	59.7	20.8%
Year IV	7.5	2.6%
<b>Undergraduate Sub-total</b>	<b>277.5</b>	<b>96.9%</b>
<b>Graduate Sub-total</b>	<b>9.0</b>	<b>3.1%</b>
<b>Grand Total</b>	<b>286.5</b>	<b>100.0%</b>

### FTE ENROLMENT Classics

YEAR	Undergraduate						Graduate		TOTAL FTEs	
	Fall/Winter	% Change	SP/SU	% Change	Total	% Change	#	% Change	#	% Change
2001-02	157.8		28.4		186.2				186.2	
2002-03	186.5	18.2%	29.2	2.8%	215.7	15.8%			215.7	15.8%
2003-04	233.1	25.0%	30.5	4.5%	263.6	22.2%			263.6	22.2%
2004-05	239.6	2.8%	17.1	-43.9%	256.7	-2.6%			256.7	-2.6%
2005-06	250.7	4.6%	7.7	-55.0%	258.4	0.7%			258.4	0.7%
2006-07	236.7	-5.6%	8.2	6.5%	244.9	-5.2%	4.0		248.9	-3.7%
2007-08	250.9	6.0%	3.6	-56.1%	254.5	3.9%	7.0	75.0%	261.5	5.1%
2008-09	243.3	-3.0%	1.6	-55.6%	244.9	-3.8%	11.0	57.1%	255.9	-2.1%
2009-10	254.7	4.7%	2.5	56.3%	257.2	5.0%	13.0	18.2%	270.2	5.6%
2010-11	257.9	1.3%	19.6	684.0%	277.5	7.9%	9.0	-30.8%	286.5	6.0%
10 Yr. Ch.	100.1	63.4%	-8.8	-31.0%	91.3	49.0%	9.0	n/a	100.3	53.9%



**2010-11 Course Enrolment**

Course (XXXX XXXX 0A0B A-- Duration, B--Section)	Spring/Summer, 2010-11			Fall/Winter, 2010-11			
	FCEs	Registered	FCE	FCEs	Nov.1	Feb. 1	FCE
CLAS 1P91 0201				0.5	233		116.5
CLAS 1P91 0201	0.5	88	44.0				
CLAS 1P92 0301				0.5		238	119.0
CLAS 1P92 0301	0.5	80	40.0				
CLAS 1P95 0201				0.5	481		240.5
CLAS 1P97 0301				0.5		493	246.5
GREE 1F00 0101				1.0	33	19	26.0
LATI 1F00 0101				1.0	50	44	47.0
LATI 1F00 0102				1.0	36	28	32.0
<b>Year I Total</b>	<b>1.0</b>	<b>168</b>	<b>84.0</b>	<b>5.0</b>	<b>833</b>	<b>822</b>	<b>827.5</b>
CLAS 2P32 0201				0.5	78		39.0
CLAS 2P35 0301				0.5		75	37.5
CLAS 2P50 0301 IASC				0.5		73	36.5
GREE 2F00 0101				1.0	11	11	11.0
LATI 2F00 0101				1.0	18	14	16.0
<b>Year II Total</b>				<b>3.5</b>	<b>107</b>	<b>173</b>	<b>140.0</b>
CLAS 3F02 0101 DART				1.0	39	36	37.5
CLAS 3F75 0401	1.0	14	14.0				
CLAS 3P03 0201 HIST				0.5	98		49.0
CLAS 3P04 0301 HIST				0.5		98	49.0
CLAS 3P05 0201 HIST				0.5	73		36.5
CLAS 3P06 0301 HIST				0.5		80	40.0
CLAS 3P24 0201 VISA				0.5	39		19.5
CLAS 3P25 0301 VISA				0.5		40	20.0
CLAS 3P61 0201 WISE HIST				0.5	22		11.0
CLAS 3V31 0301				0.5		28	14.0
GREE 3P11 0201				0.5	5		2.5
LATI 3P11 0301				0.5		11	5.5
<b>Year III Total</b>	<b>1.0</b>	<b>14</b>	<b>14.0</b>	<b>6.0</b>	<b>276</b>	<b>293</b>	<b>284.5</b>
CLAS 4V30 0201 VISA				0.5	14		7.0
CLAS 4V38 0301 VISA				0.5		15	7.5
CLAS 4V50 0201				0.5	13		6.5
CLAS 4V63 0301				0.5		16	8.0
CLAS 4V95 0201				0.5	2		1.0
GREE 4P21 0301				0.5		6	3.0
LATI 4P21 0201				0.5	8		4.0
LATI 4V98 0201				0.5	1		0.5
<b>Year IV Total</b>				<b>4.0</b>	<b>38</b>	<b>37</b>	<b>37.5</b>
<b>Undergraduate Total</b>	<b>2.0</b>	<b>182</b>	<b>98.0</b>	<b>18.5</b>	<b>1,254</b>	<b>1,325</b>	<b>1,289.5</b>
CLAS 5F90 1001				1.0	1		1.0
CLAS 5F90 1101				1.0		1	1.0
CLAS 5P00 0101				0.5	3	3	1.5
CLAS 5P90 0401	0.5	8	4.0				
CLAS 5P90 1001				0.5	6		3.0
CLAS 5P90 1101				0.5		5	2.5
CLAS 5V32 0201				0.5	7		3.5
CLAS 5V54 0301				0.5		5	2.5
CLAS 5V83 0201	0.5	1	0.5				
GREE 5V01 0301				0.5		7	3.5
LATI 5P80 0201				0.5	1		0.5
LATI 5V22 0201				0.5	7		3.5
<b>Graduate Total</b>	<b>1.0</b>	<b>9</b>	<b>4.5</b>	<b>6.0</b>	<b>25</b>	<b>21</b>	<b>22.50</b>
<b>Classics Total</b>	<b>3.0</b>	<b>191</b>	<b>102.5</b>	<b>24.5</b>	<b>1,279</b>	<b>1,346</b>	<b>1,312.0</b>