

FULL-TIME EQUIVALENT (FTE) ENROLMENT: THREE-YEAR SUMMARY
Department: Physical Education and Kinesiology

(Data include ALL sections and ALL enrolment in ALL sessions)

A. UNDERGRADUATE COURSE ENROLMENTS

	2008-09					2009-10					2010-11				
	Fall/Winter			Spring/ Summer	All Sessions	Fall/Winter			Spring/ Summer	All Sessions	Fall/Winter			Spring/ Summer	All Sessions
	Nov. 1st	Feb. 1st	Sub-Total			Nov. 1st	Feb. 1st	Sub-Total			Nov. 1st	Feb. 1st	Sub-Total		
Year I	438	509	473.5		473.5	507	506	506.5	35.5	542.0	510	516	513.0	59.0	572.0
Year II	1,365	1,348	1,356.5	17.5	1,374.0	1,491	1,386	1,438.5	31.5	1,470.0	1,575	1,333	1,448.75	30.5	1,479.25
Year III	774	975	874.5	10.5	885.0	766	908	837.0	9.5	846.5	913	882	897.5	6.0	903.5
Year IV	631	519	575.0	3.0	578.0	622	564	593.0	12.5	605.5	667	634	650.5	20.5	671.0
Total	3,208	3,351	3,279.5	31.0	3,310.5	3,386	3,364	3,375.0	89.0	3,464.0	3,665	3,365	3,509.75	116.0	3,625.75

B. AVERAGE CLASS/SECTION SIZES

	Fall/Winter		Spring/Summer		Average All Sessions	Fall/Winter		Spring/Summer		Average All Sessions	Fall/Winter		Spring/Summer		Average All Sessions
	Sections	Ave.	Sections	Ave.		Sections	Ave.	Sections	Ave.		Sections	Ave.	Sections	Ave.	
Year I	2.0	236.8			236.8	2.0	253.3	0.5	71.0	216.8	2.0	256.5	1.0	59.0	190.7
Year II	15.0	90.4	1.0	17.5	85.9	12.5	115.1	1.5	21.0	105.0	14.0	103.5	1.0	30.5	98.6
Year III	13.5	64.8	1.5	7.0	59.0	11.0	76.1	1.5	6.3	67.7	11.5	78.0	1.0	6.0	72.3
Year IV	14.5	39.7	2.0	1.5	35.0	14.5	40.9	1.5	8.3	37.8	14.0	46.5	3.0	6.8	39.5
Total:	45.0	72.9	4.5	6.9	66.9	40.0	84.4	5.0	17.8	77.0	41.5	84.6	6.0	19.3	76.3

C. GRADUATE ENROLMENT*

	Full-Time	Part-Time	Graduate FTEs
	Nov.	Nov. x .3	
2008-09			
2009-10			
2010-11			

D. TOTAL FTE ENROLMENT

	UNDERGRADUATE FTEs (Course Enrolments/5)						GRADUATE*		TOTAL	% Change from Prev. Year
	Fall/Winter		Spring/Summer		Sub-total		FTEs			
	#	%	#	%	#	%	#	%		
2008-09	655.9	99.1%	6.2	0.9%	662.1	100.0%			662.1	
2009-10	675.0	97.4%	17.8	2.6%	692.8	100.0%			692.8	4.6%
2010-11	702.0	96.8%	23.2	3.2%	725.2	100.0%			725.2	4.7%

*FAHS Graduates are reported under the Faculty only

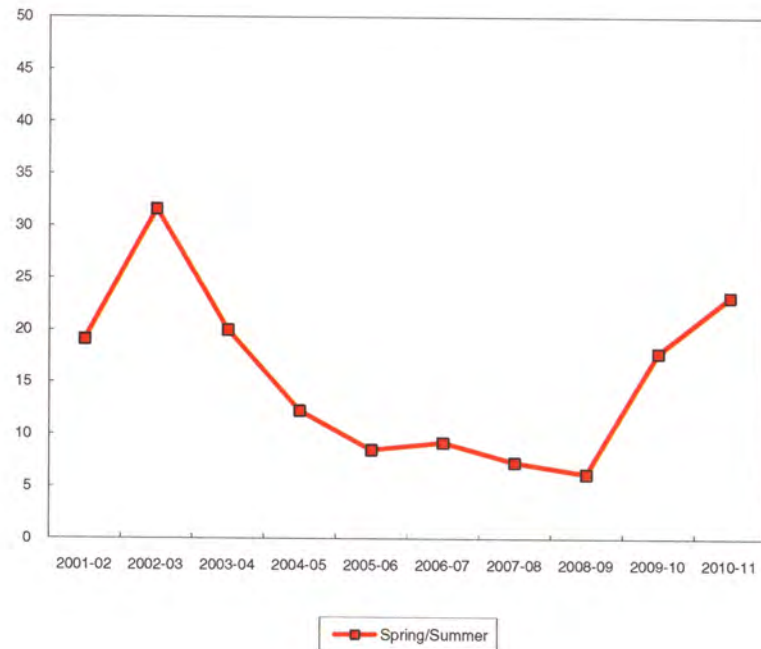
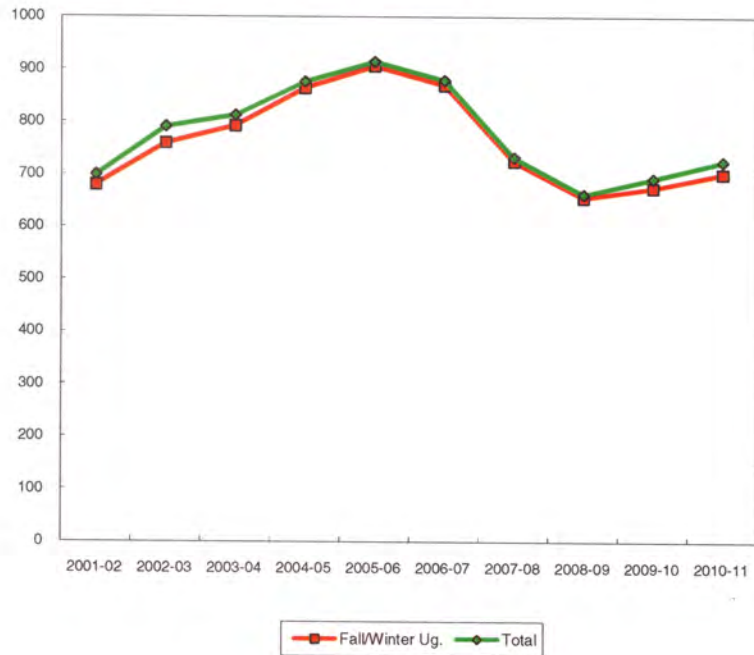
FTE Enrolment, 2010-11

Level	FTEs	%
Year I	114.4	15.8%
Year II	295.9	40.8%
Year III	180.7	24.9%
Year IV	134.2	18.5%
Undergraduate Sub-total	725.2	100.0%
Graduate Sub-total	0.0	0.0%
Grand Total	725.2	100.0%

FTE ENROLMENT
Physical Education and Kinesiology

YEAR	Undergraduate						Graduate*		TOTAL FTEs	
	Fall/Winter	% Change	SP/SU	% Change	Total	% Change	#	% Change	#	% Change
2001-02	679.6		19.1		698.7				698.7	
2002-03	759.1	11.7%	31.6	65.4%	790.7	13.2%			790.7	13.7%
2003-04	792.3	4.4%	20.0	-36.7%	812.3	2.7%			812.3	3.1%
2004-05	864.1	9.1%	12.3	-38.8%	876.4	7.9%			876.4	8.4%
2005-06	905.8	4.8%	8.5	-30.6%	914.3	4.3%			914.3	5.1%
2006-07	869.8	-4.0%	9.2	8.2%	879.0	-3.9%			879.0	-3.0%
2007-08	725.0	-16.6%	7.3	-20.7%	732.3	-16.7%			732.3	-16.7%
2008-09	655.9	-9.5%	6.2	-15.1%	662.1	-9.6%			662.1	-9.6%
2009-10	675.0	2.9%	17.8	187.1%	692.8	4.6%			692.8	4.6%
2010-11	702.0	4.0%	23.2	30.3%	725.2	4.7%			725.2	4.7%
10 Yr. Ch.	22.4	3.3%	4.1	21.5%	26.5	3.8%			26.5	3.8%

* Graduate are reported under FAHS Only



2010-11 Course Enrolment

Course (XXXX XXXX 0A0B A-- Duration, B--Section)	Spring/Summer, 2010-11			Fall/Winter, 2010-11			
	FCEs	Registered	FCE	FCEs	Nov.1	Feb. 1	FCE
PEKN 1P90 0201				0.5	337		168.5
PEKN 1P90 0301				0.5		337	168.5
PEKN 1P90 0301	0.5	60	30.0				
PEKN 1P93 0201				0.5	173		86.5
PEKN 1P93 0201	0.5	58	29.0				
PEKN 1P93 0301				0.5		179	89.5
Year I Total	1.0	118	59.0	2.0	510	516	513.0
PEKN 2P00 0201				0.5	82		41.0
PEKN 2P00 0301				0.5		61	30.5
PEKN 2P01 0101				0.5	12	9	5.25
PEKN 2P03 0202				0.5	27		13.5
PEKN 2P03 0301				0.5		77	38.5
PEKN 2P04 0201				0.5	124		62.0
PEKN 2P05 0201				0.5	141		70.5
PEKN 2P05 0301				0.5		121	60.5
PEKN 2P06 0201				0.5	51		25.5
PEKN 2P06 0301				0.5		52	26.0
PEKN 2P08 0201				0.5	119		59.5
PEKN 2P08 0301				0.5		161	80.5
PEKN 2P09 0201				0.5	218		109.0
PEKN 2P09 0301				0.5		101	50.5
PEKN 2P09 0301	0.5	27	13.5				
PEKN 2P41 0201				0.5	128		64.0
PEKN 2P41 0301				0.5		106	53.0
PEKN 2P70 0201				0.5	79		39.5
PEKN 2P70 0201	0.5	34	17.0				
PEKN 2P84 0201				0.5	131		65.5
PEKN 2P84 0301				0.5		143	71.5
PEKN 2P85 0201				0.5	51		25.5
PEKN 2P90 0201				0.5	114		57.0
PEKN 2P91 0201				0.5	116		58.0
PEKN 2P91 0301				0.5		122	61.0
PEKN 2P92 0201				0.5	60		30.0
PEKN 2P92 0301				0.5		98	49.0
PEKN 2P95 0201				0.5	122		61.0
PEKN 2P95 0301				0.5		120	60.0
PEKN 2P97 0301				0.5		162	81.0
Year II Total	1.0	61	30.5	14.0	1,575	1,333	1,448.75
PEKN 3P00 0301				0.5		111	55.5
PEKN 3P02 0201				0.5	112		56.0
PEKN 3P03 0201				0.5	20		10.0
PEKN 3P05 0301				0.5		160	80.0
PEKN 3P06 0301				0.5		21	10.5
PEKN 3P08 0201				0.5	150		75.0
PEKN 3P10 0201				0.5	114		57.0
PEKN 3P10 0301				0.5		141	70.5
PEKN 3P13 0201				0.5	24		12.0
PEKN 3P13 0202				0.5	26		13.0
PEKN 3P18 0301				0.5		75	37.5
PEKN 3P32 0301				0.5		47	23.5

2010-11 Course Enrolment

Course (XXXX XXXX 0A0B A-- Duration, B--Section)	Spring/Summer, 2010-11			Fall/Winter, 2010-11			
	FCEs	Registered	FCE	FCEs	Nov.1	Feb. 1	FCE
PEKN 3P41 0201				0.5	62		31.0
PEKN 3P52 0201				0.5	57		28.5
PEKN 3P70 0201				0.5	35		17.5
PEKN 3P90 0201				0.5	134		67.0
PEKN 3P91 0201				0.5	39		19.5
PEKN 3P91 0301				0.5		75	37.5
PEKN 3P93 0201				0.5	123		61.5
PEKN 3P94 0301				0.5		141	70.5
PEKN 3P95 0301				0.5		75	37.5
PEKN 3P99 0101	0.5	5	2.5		17		8.5
PEKN 3P99 0201				0.5			
PEKN 3P99 0301				0.5		36	18.0
PEKN 3P99 0401	0.5	7	3.5				
Year III Total	1.0	12	6.0	11.5	913	882	897.5
PEKN 4F32 0201	1.0	17	17.0				
PEKN 4F91 0101				1.0	51	53	52.0
PEKN 4F91 0101	1.0	1	1.0				
PEKN 4F93 0101				1.0	92	91	91.5
PEKN 4P00 0201				0.5	117		58.5
PEKN 4P02 0201				0.5	33		16.5
PEKN 4P02 0301				0.5		41	20.5
PEKN 4P08 0201				0.5	59		29.5
PEKN 4P10 0201				0.5	56		28.0
PEKN 4P10 0301				0.5		78	39.0
PEKN 4P11 0301				0.5		57	28.5
PEKN 4P22 0201				0.5	40		20.0
PEKN 4P31 0301				0.5		56	28.0
PEKN 4P32 0201				0.5	29		14.5
PEKN 4P60 0301				0.5		20	10.0
PEKN 4P71 0201				0.5	47		23.5
PEKN 4P80 0201				0.5	21		10.5
PEKN 4P81 0301				0.5		20	10.0
PEKN 4P84 0301				0.5		45	22.5
PEKN 4P85 0301				0.5		51	25.5
PEKN 4P91 0301				0.5		19	9.5
PEKN 4P94 0201				0.5	27		13.5
PEKN 4P95 0301				0.5		56	28.0
PEKN 4P96 0201				0.5	66		33.0
PEKN 4P97 0301				0.5		28	14.0
PEKN 4P98 0201				0.5	11		5.5
PEKN 4P99 0101	0.5	1	0.5		18		9.0
PEKN 4P99 0201				0.5			
PEKN 4P99 0301				0.5		19	9.5
PEKN 4P99 0401	0.5	4	2.0				
Year IV Total	3.0	23	20.5	14.0	667	634	650.5
Physical Education and Kinesiology Total	6.0	214	116.0	41.5	3,665	3,365	3,509.75